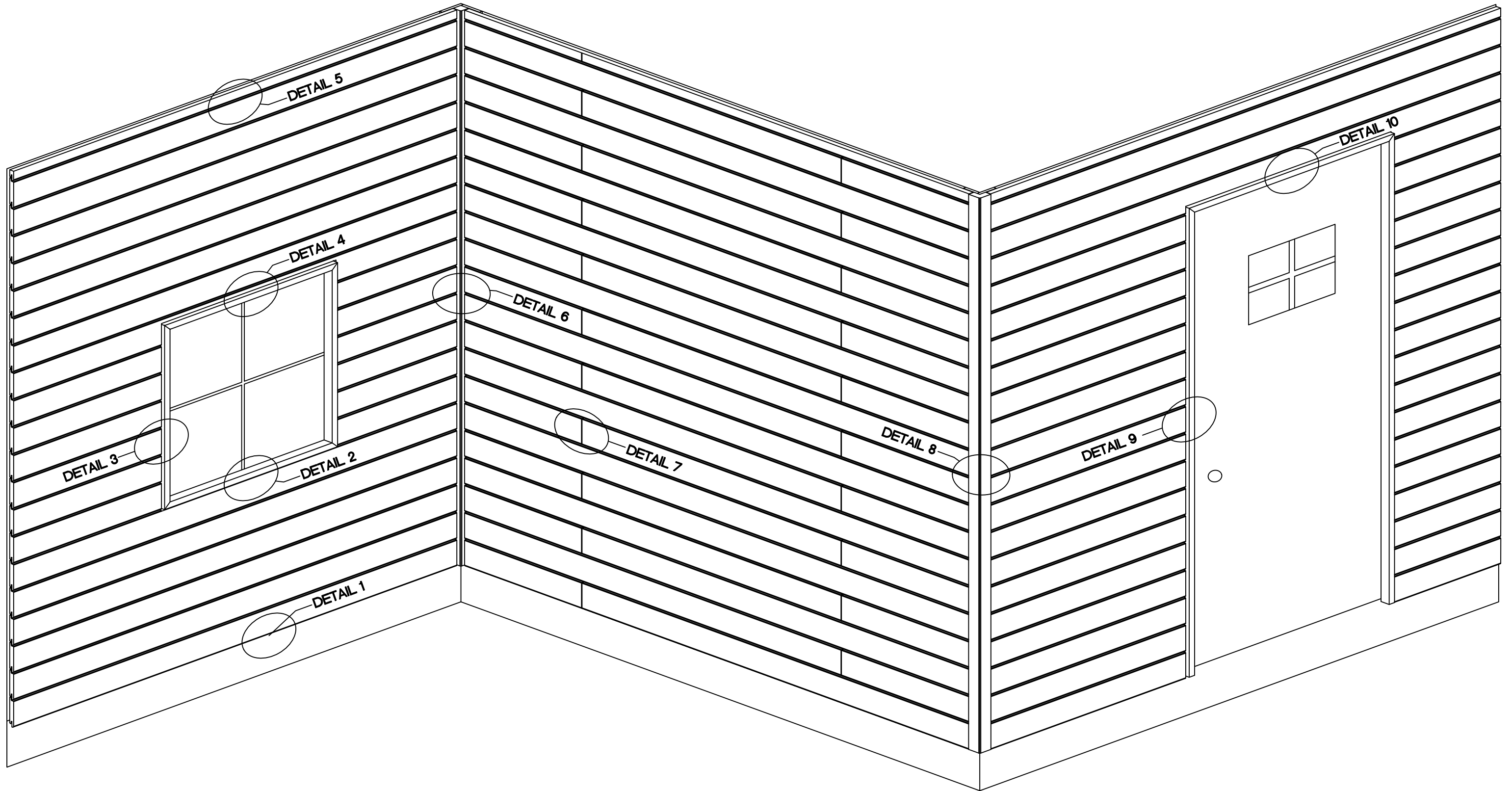


NO.	REVISION/ISSUE	DATE



DISCLAIMER:  
 ALL INFORMATION CONTAINED WITHIN THIS DOCUMENT IS SOLE PROPERTY OF LAMBOO TECHNOLOGIES, LLC. ANY REPRODUCTION  
 IN PART OR AS A WHOLE WITHOUT THE WRITTEN PERMISSION OF LAMBOO TECHNOLOGIES, LLC IS STRICTLY PROHIBITED.

TITLE: **EXTERIOR WALL ASSEMBLY**

DRAWN BY: <b>CJC</b>	SHEET
DATE: 02/04/2020	
SCALE: NTS	

NO.	REVISION/ISSUE	DATE

## TABLE OF CONTENTS

TABLE OF CONTENTS (SHEET 2)

DETAIL 1: (SHEET 3) STARTING DETAIL

DETAIL 2:

2A - (SHEET 4) WINDOW SILL DETAIL

2B - (SHEET 5) WINDOW SILL DETAIL

DETAIL 3: (SHEET 6) WINDOW JAMB DETAIL

DETAIL 4: (SHEET 7) WINDOW HEAD DETAIL

DETAIL 5:

5A - (SHEET 8) SOFFIT / FASCIA DETAIL

5B - (SHEET 9) SOFFIT DETAIL

DETAIL 6:

6A - (SHEET 10) INSIDE CORNER DETAIL

6B - (SHEET 11) INSIDE CORNER DETAIL

DETAIL 7: (SHEET 12) BUTT JOINT DETAIL

DETAIL 8:

8A - (SHEET 13) OUTSIDE CORNER DETAIL

8B - (SHEET 14) OUTSIDE CORNER DETAIL

DETAIL 9:

9A - (SHEET 15) DOOR JAMB DETAIL

9B - (SHEET 16) DOOR JAMB DETAIL

DETAIL 10:

10A - (SHEET 17) DOOR HEAD DETAIL

10B - (SHEET 18) DOOR HEAD DETAIL

DISCLAIMER:  
ALL INFORMATION CONTAINED WITHIN THIS DOCUMENT IS SOLE PROPERTY OF LAMBOO TECHNOLOGIES, LLC. ANY REPRODUCTION  
IN PART OR AS A WHOLE WITHOUT THE WRITTEN PERMISSION OF LAMBOO TECHNOLOGIES, LLC IS STRICTLY PROHIBITED.

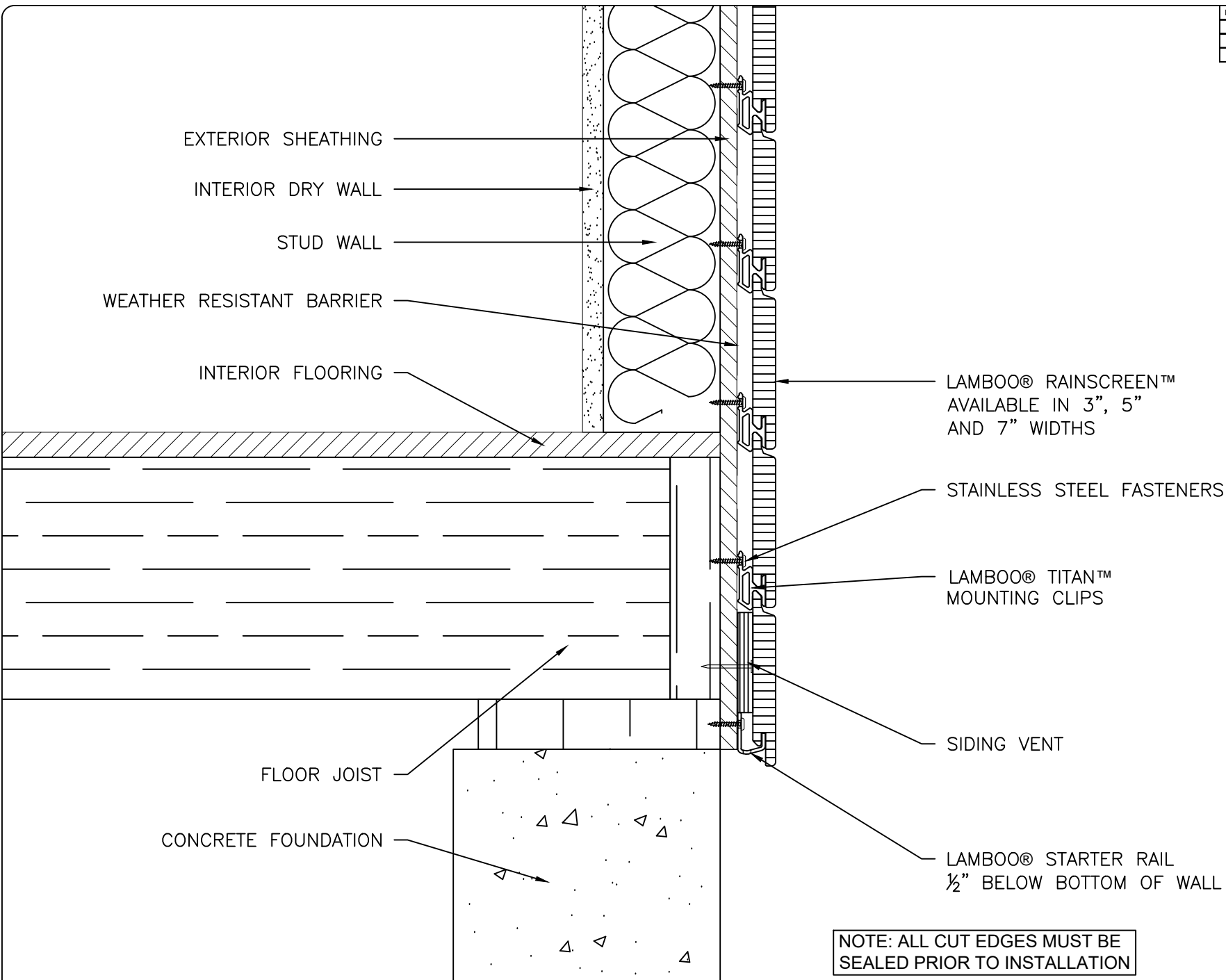
TITLE: TABLE OF CONTENETS

DRAWN BY: <b>CJC</b>	SHEET
DATE: 02/04/2020	<b>2</b>
SCALE: NTS	



311 W. EDWARDS STREET/LITCHFIELD, IL 62056 P:866-966-2999  
E:ADMIN@LAMBOO.US W: WWW.LAMBOO.US

NO.	REVISION/ISSUE	DATE



EXTERIOR SHEATHING

INTERIOR DRY WALL

STUD WALL

WEATHER RESISTANT BARRIER

INTERIOR FLOORING

LAMBOO® RAINSCREEN™  
AVAILABLE IN 3", 5"  
AND 7" WIDTHS

STAINLESS STEEL FASTENERS

LAMBOO® TITAN™  
MOUNTING CLIPS

SIDING VENT

LAMBOO® STARTER RAIL  
½" BELOW BOTTOM OF WALL

FLOOR JOIST

CONCRETE FOUNDATION

NOTE: ALL CUT EDGES MUST BE  
SEALED PRIOR TO INSTALLATION

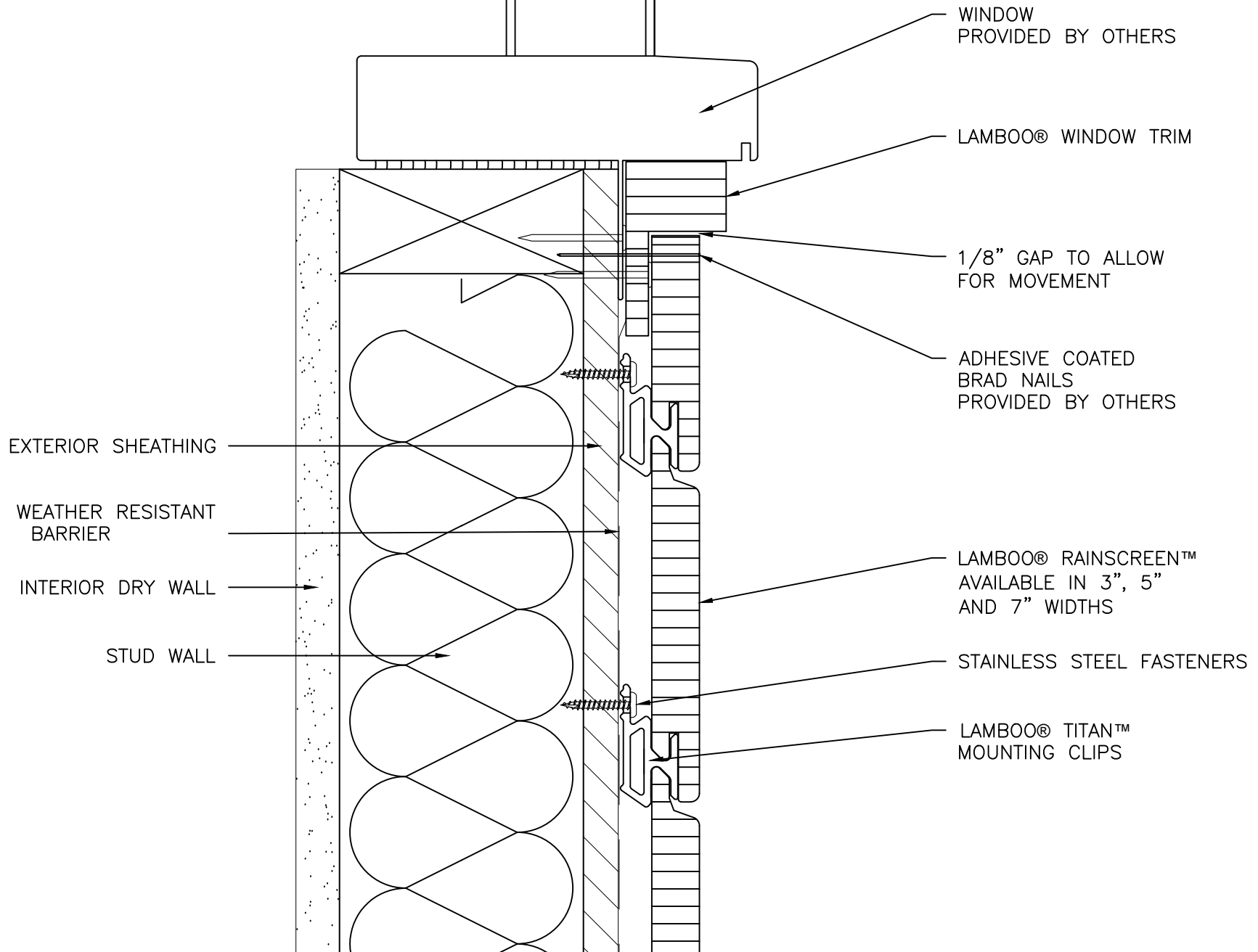
DISCLAIMER:  
ALL INFORMATION CONTAINED WITHIN THIS DOCUMENT IS SOLE PROPERTY OF LAMBOO TECHNOLOGIES, LLC. ANY REPRODUCTION  
IN PART OR AS A WHOLE WITHOUT THE WRITTEN PERMISSION OF LAMBOO TECHNOLOGIES, LLC IS STRICTLY PROHIBITED.

TITLE: DETAIL 1  
STARTING DETAIL

DRAWN BY:  
CJC  
DATE:  
02/04/2020  
SCALE:  
3" = 1'-0"

SHEET  
**3**

NO.	REVISION/ISSUE	DATE



DISCLAIMER:  
 ALL INFORMATION CONTAINED WITHIN THIS DOCUMENT IS SOLE PROPERTY OF LAMBOO TECHNOLOGIES, LLC. ANY REPRODUCTION  
 IN PART OR AS A WHOLE WITHOUT THE WRITTEN PERMISSION OF LAMBOO TECHNOLOGIES, LLC IS STRICTLY PROHIBITED.

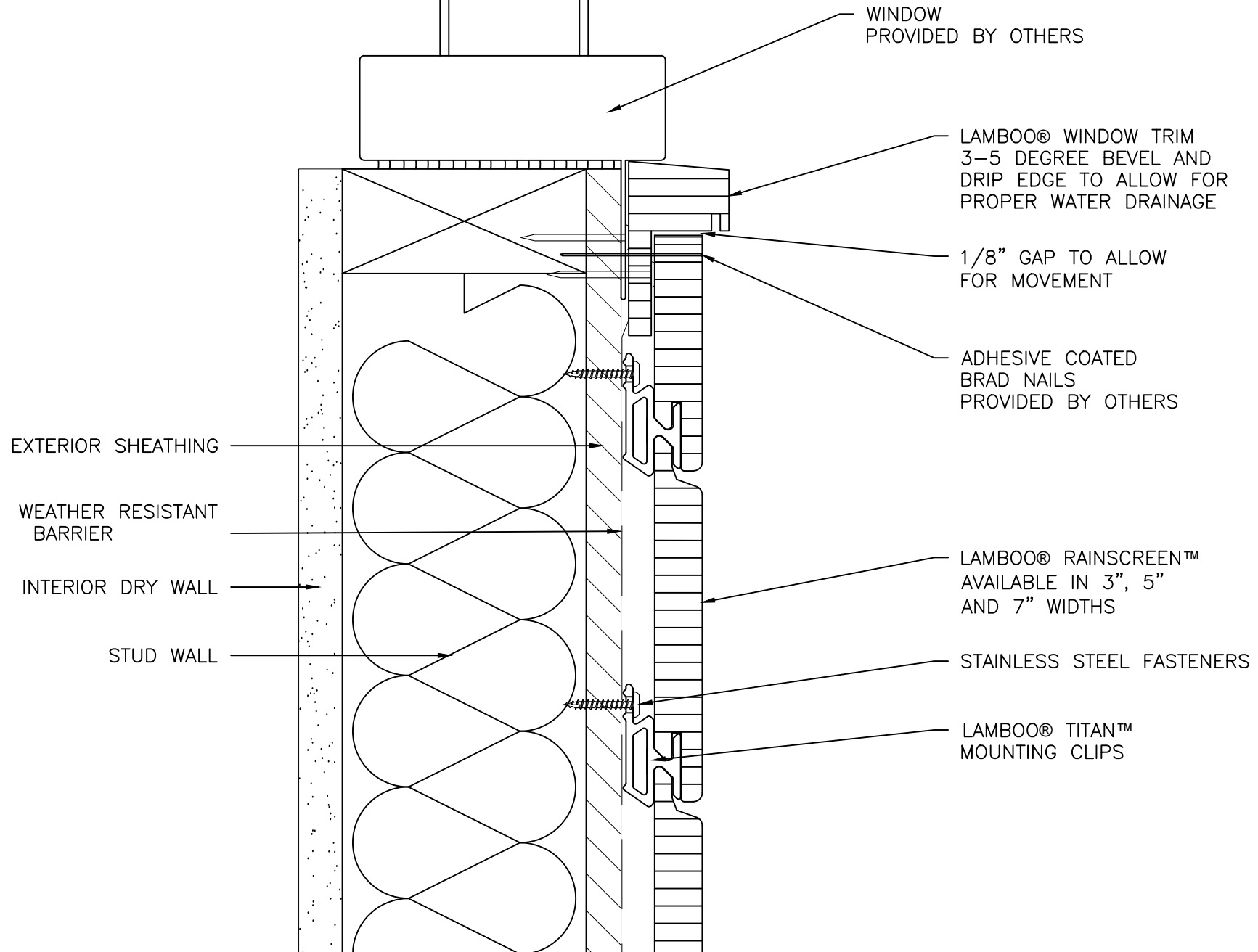
TITLE:DETAIL 2A  
 WINDOW SILL DETAIL

DRAWN BY: <b>CJC</b>	<b>4</b>
DATE: 02/04/2020	
SCALE: 6" = 1'-0"	
SHEET	



311 W. EDWARDS STREET/LITCHFIELD, IL 62056 P:866-966-2999  
 E:ADMIN@LAMBOO.US W: WWW.LAMBOO.US

NO.	REVISION/ISSUE	DATE



DISCLAIMER:  
 ALL INFORMATION CONTAINED WITHIN THIS DOCUMENT IS SOLE PROPERTY OF LAMBOO TECHNOLOGIES, LLC. ANY REPRODUCTION  
 IN PART OR AS A WHOLE WITHOUT THE WRITTEN PERMISSION OF LAMBOO TECHNOLOGIES, LLC IS STRICTLY PROHIBITED.

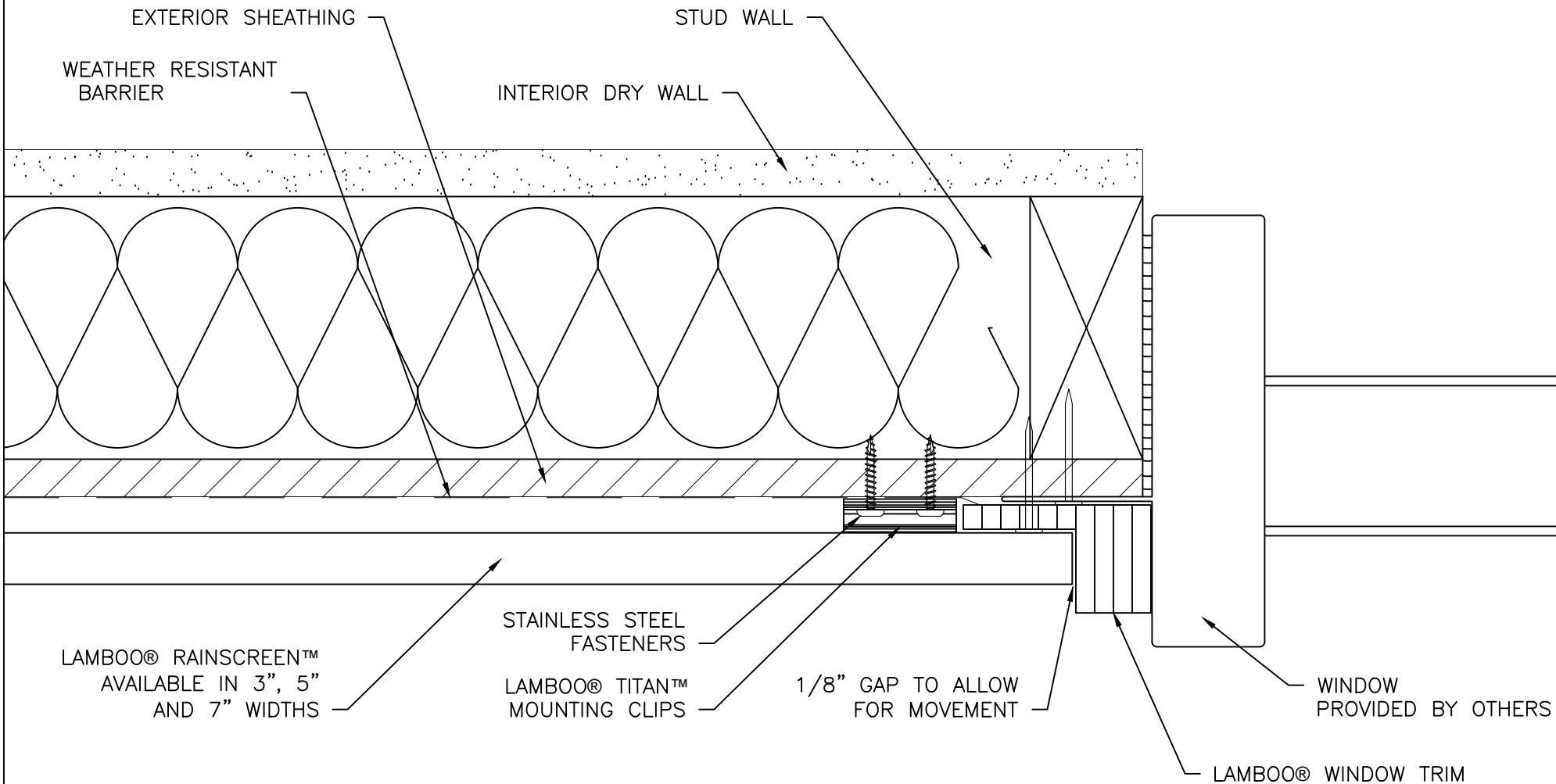
TITLE:DETAIL 2B  
 WINDOW SILL DETAIL

DRAWN BY: <b>CJC</b>	SHEET
DATE: 02/04/2020	<b>5</b>
SCALE: 6" = 1'-0"	



311 W. EDWARDS STREET/LITCHFIELD, IL 62056 P:866-966-2999  
 E:ADMIN@LAMBOO.US W: WWW.LAMBOO.US

NO.	REVISION/ISSUE	DATE



DISCLAIMER:  
ALL INFORMATION CONTAINED WITHIN THIS DOCUMENT IS SOLE PROPERTY OF LAMBOO TECHNOLOGIES, LLC. ANY REPRODUCTION  
IN PART OR AS A WHOLE WITHOUT THE WRITTEN PERMISSION OF LAMBOO TECHNOLOGIES, LLC IS STRICTLY PROHIBITED.

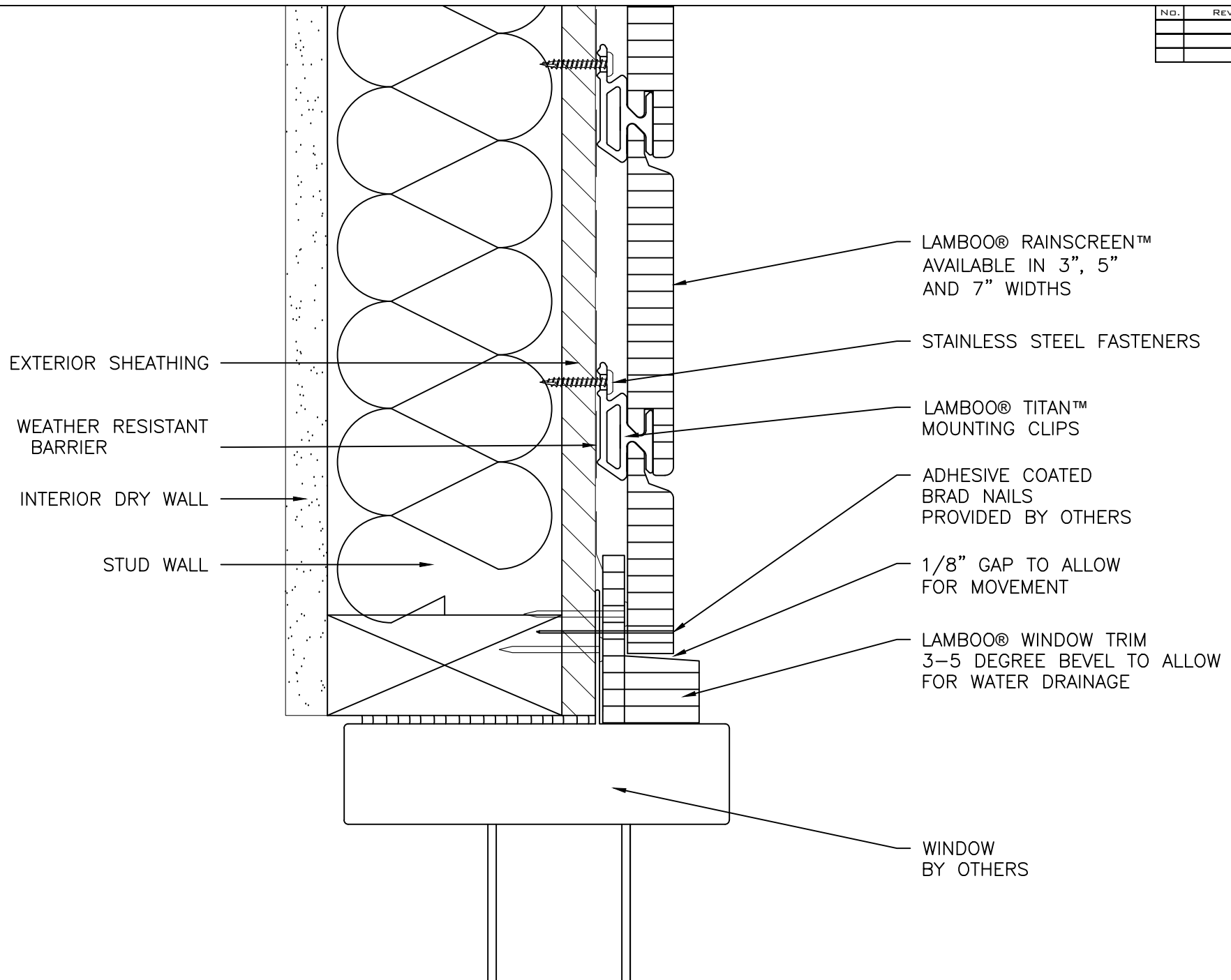
TITLE:DETAIL 3  
WINDOW JAMB DETAIL

DRAWN BY: <b>CJC</b>	SHEET
DATE: 02/04/2020	<b>6</b>
SCALE: 6" = 1'-0"	



311 W. EDWARDS STREET/LITCHFIELD, IL 62056 P:866-966-2999  
E:ADMIN@LAMBOO.US W: WWW.LAMBOO.US

NO.	REVISION/ISSUE	DATE



LAMBOO® RAINSCREEN™  
AVAILABLE IN 3", 5"  
AND 7" WIDTHS

STAINLESS STEEL FASTENERS

LAMBOO® TITAN™  
MOUNTING CLIPS

ADHESIVE COATED  
BRAD NAILS  
PROVIDED BY OTHERS

1/8" GAP TO ALLOW  
FOR MOVEMENT

LAMBOO® WINDOW TRIM  
3-5 DEGREE BEVEL TO ALLOW  
FOR WATER DRAINAGE

WINDOW  
BY OTHERS

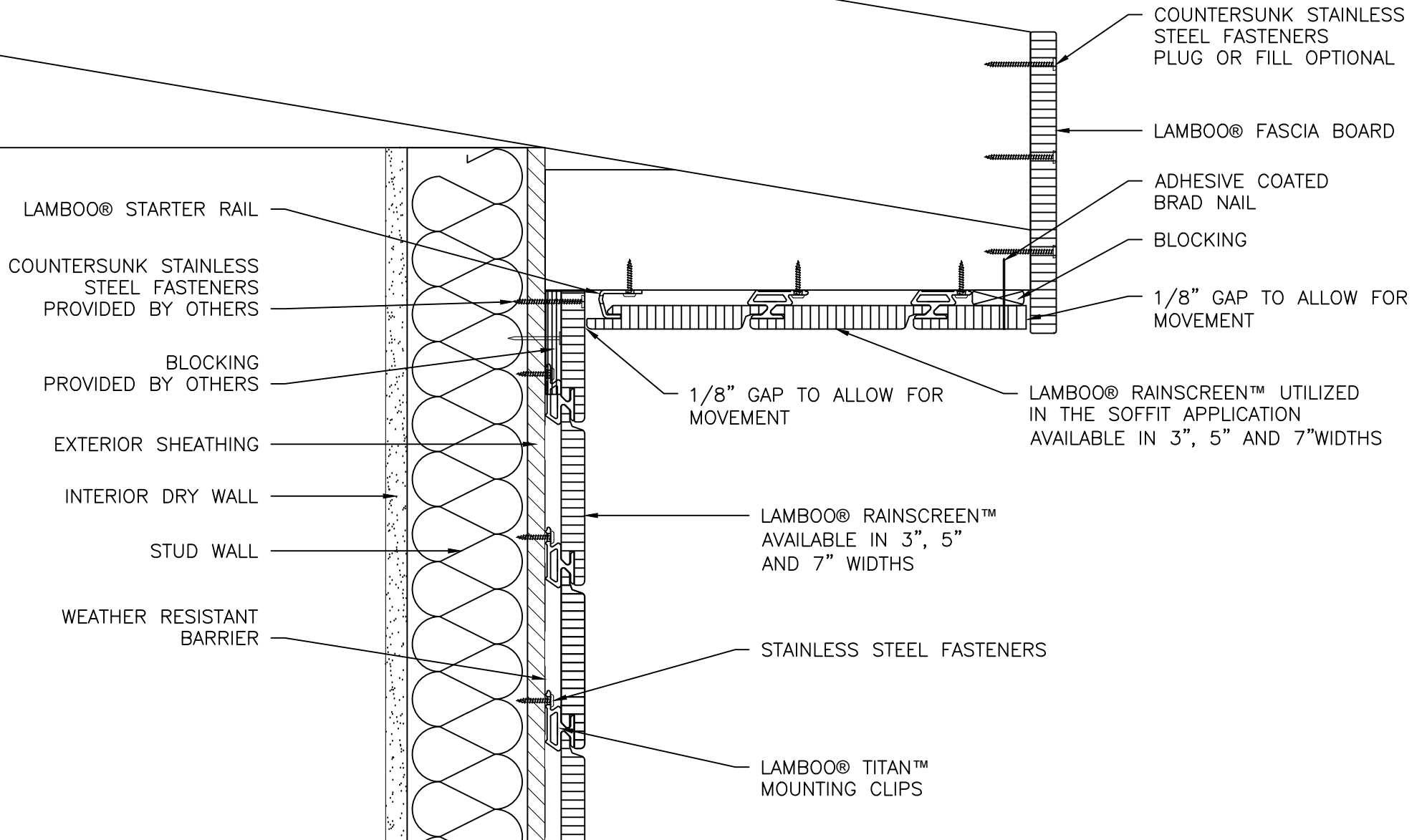
DISCLAIMER:  
ALL INFORMATION CONTAINED WITHIN THIS DOCUMENT IS SOLE PROPERTY OF LAMBOO TECHNOLOGIES, LLC. ANY REPRODUCTION  
IN PART OR AS A WHOLE WITHOUT THE WRITTEN PERMISSION OF LAMBOO TECHNOLOGIES, LLC IS STRICTLY PROHIBITED.

TITLE:DETAIL 4  
WINDOW HEAD DETAIL

DRAWN BY:  
**CJC**  
DATE:  
02/04/2020  
SCALE:  
6" = 1'-0"

SHEET  
**7**

NO.	REVISION/ISSUE	DATE



DISCLAIMER:  
 ALL INFORMATION CONTAINED WITHIN THIS DOCUMENT IS SOLE PROPERTY OF LAMBOO TECHNOLOGIES, LLC. ANY REPRODUCTION  
 IN PART OR AS A WHOLE WITHOUT THE WRITTEN PERMISSION OF LAMBOO TECHNOLOGIES, LLC IS STRICTLY PROHIBITED.

TITLE:DETAIL 5A  
 SOFFIT / FASCIA DETAIL

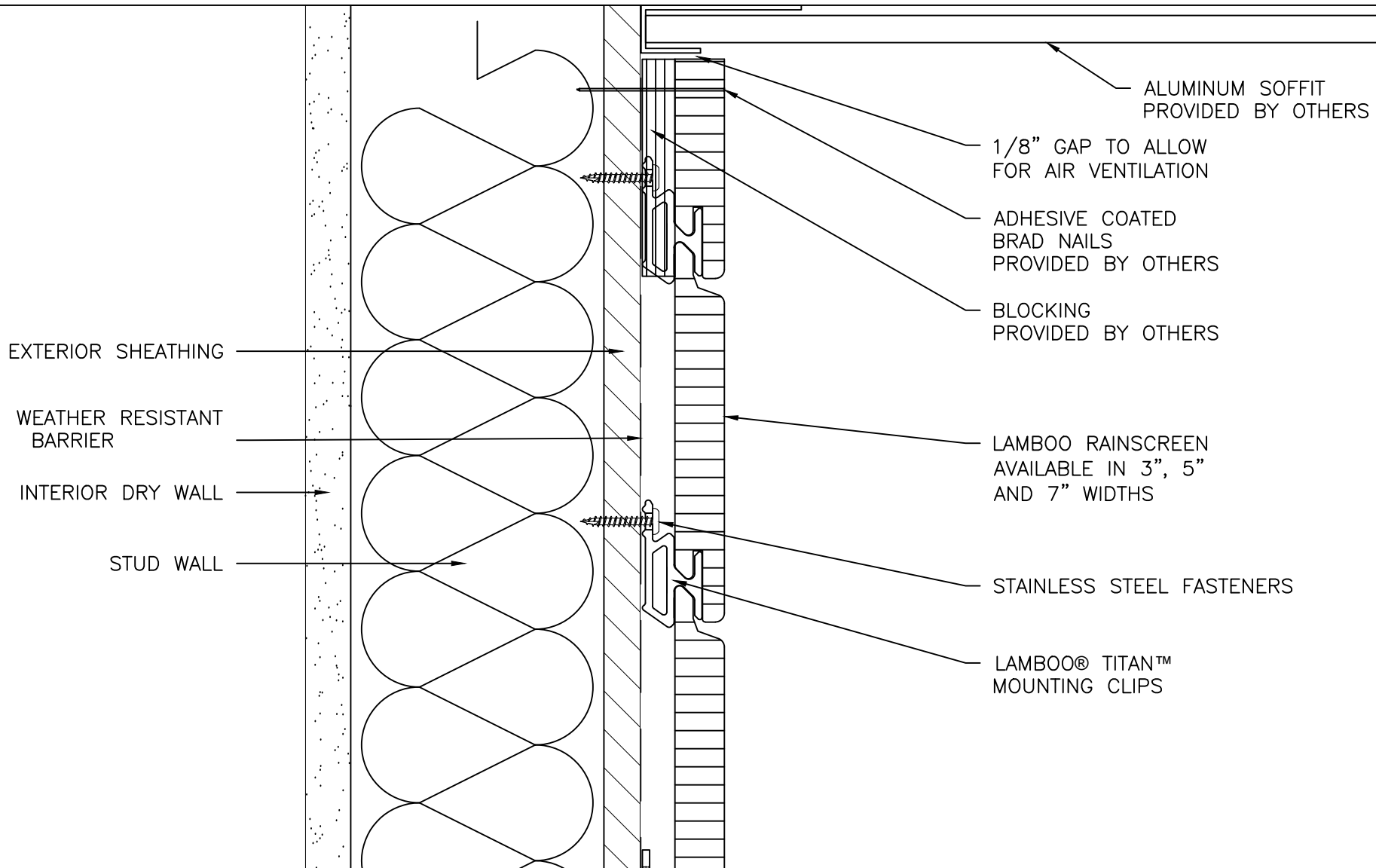
DRAWN BY: CJC	SHEET
DATE: 02/04/2020	8
SCALE: 3" = 1'-0"	



311 W. EDWARDS STREET/LITCHFIELD, IL 62056 P:866-966-2999  
 E:ADMIN@LAMBOO.US W: WWW.LAMBOO.US



NO.	REVISION/ISSUE	DATE



DISCLAIMER:  
 ALL INFORMATION CONTAINED WITHIN THIS DOCUMENT IS SOLE PROPERTY OF LAMBOO TECHNOLOGIES, LLC. ANY REPRODUCTION  
 IN PART OR AS A WHOLE WITHOUT THE WRITTEN PERMISSION OF LAMBOO TECHNOLOGIES, LLC IS STRICTLY PROHIBITED.

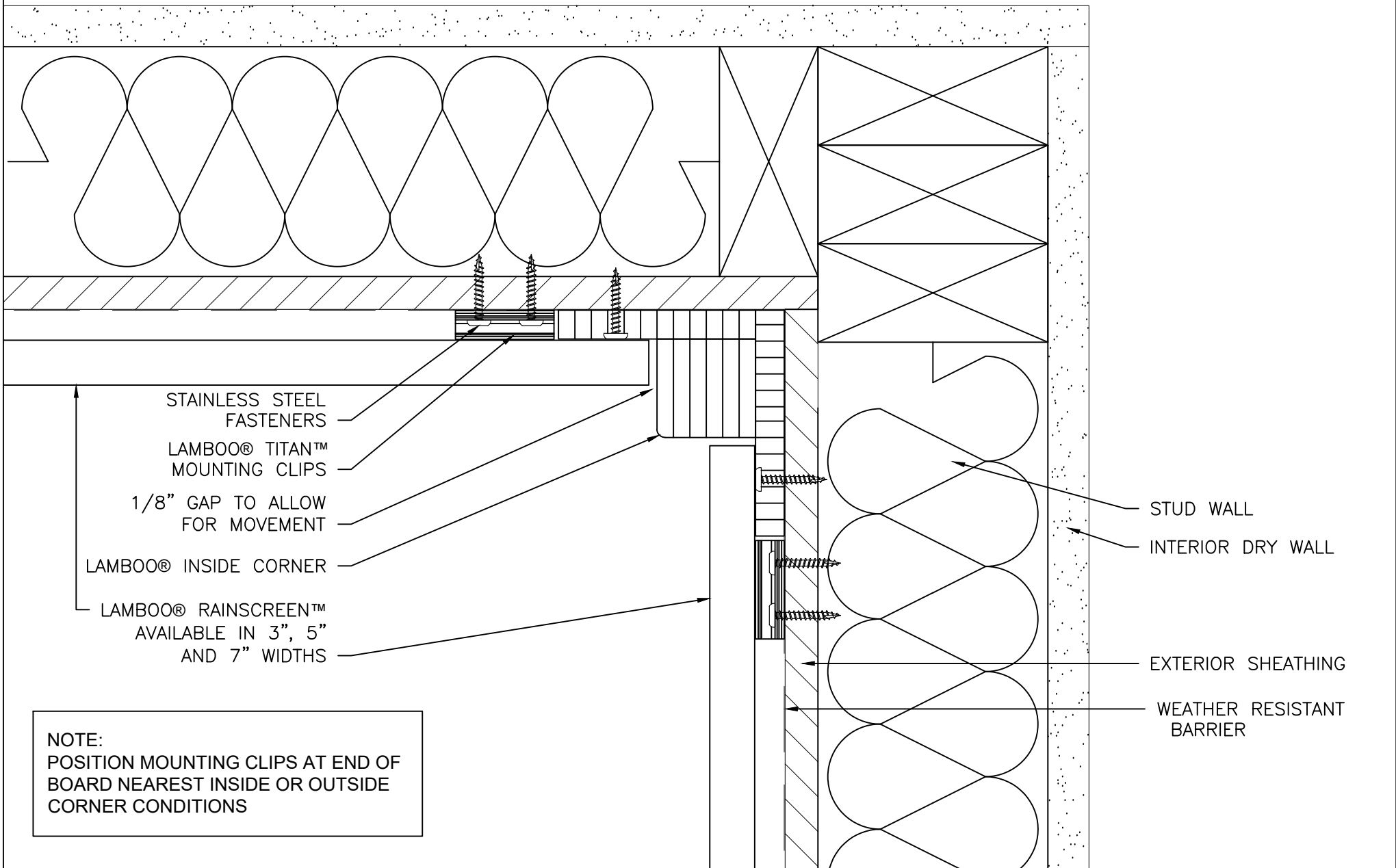
TITLE:DETAIL 5B  
 SOFFIT DETAIL

DRAWN BY: <b>CJC</b>	SHEET
DATE: 02/04/2020	<b>9</b>
SCALE: 6" = 1'-0"	



311 W. EDWARDS STREET/LITCHFIELD, IL 62056 P:866-966-2999  
 E:ADMIN@LAMBOO.US W: WWW.LAMBOO.US

NO.	REVISION/ISSUE	DATE



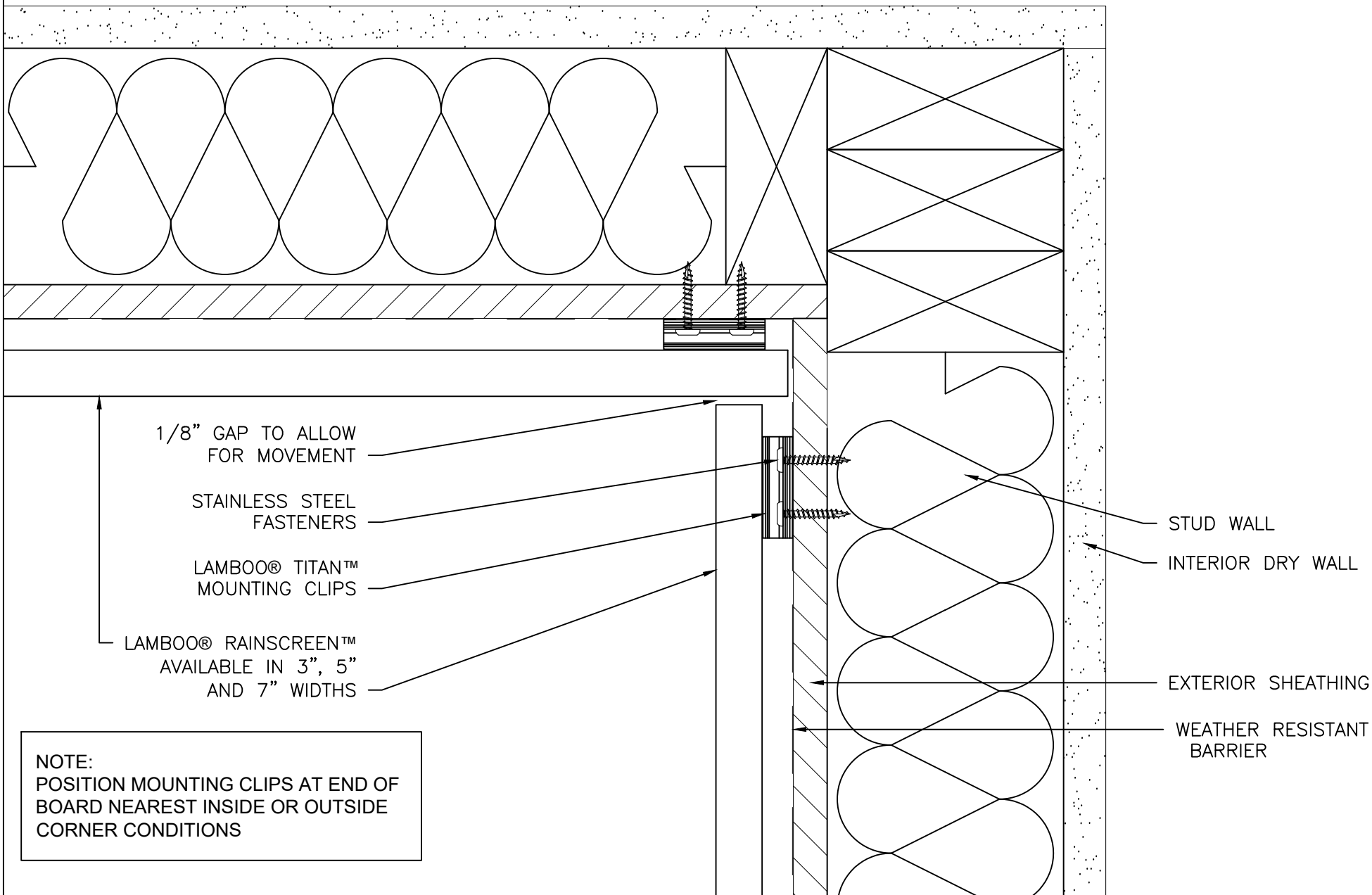
**NOTE:**  
 POSITION MOUNTING CLIPS AT END OF BOARD NEAREST INSIDE OR OUTSIDE CORNER CONDITIONS

DISCLAIMER:  
 ALL INFORMATION CONTAINED WITHIN THIS DOCUMENT IS SOLE PROPERTY OF LAMBOO TECHNOLOGIES, LLC. ANY REPRODUCTION IN PART OR AS A WHOLE WITHOUT THE WRITTEN PERMISSION OF LAMBOO TECHNOLOGIES, LLC IS STRICTLY PROHIBITED.

**TITLE:DETAIL 6A  
 INSIDE CORNER DETAIL**

<b>DRAWN BY:</b> CJC	<b>SHEET</b>
<b>DATE:</b> 02/04/2020	<b>10</b>
<b>SCALE:</b> 6" = 1'-0"	

NO.	REVISION/ISSUE	DATE



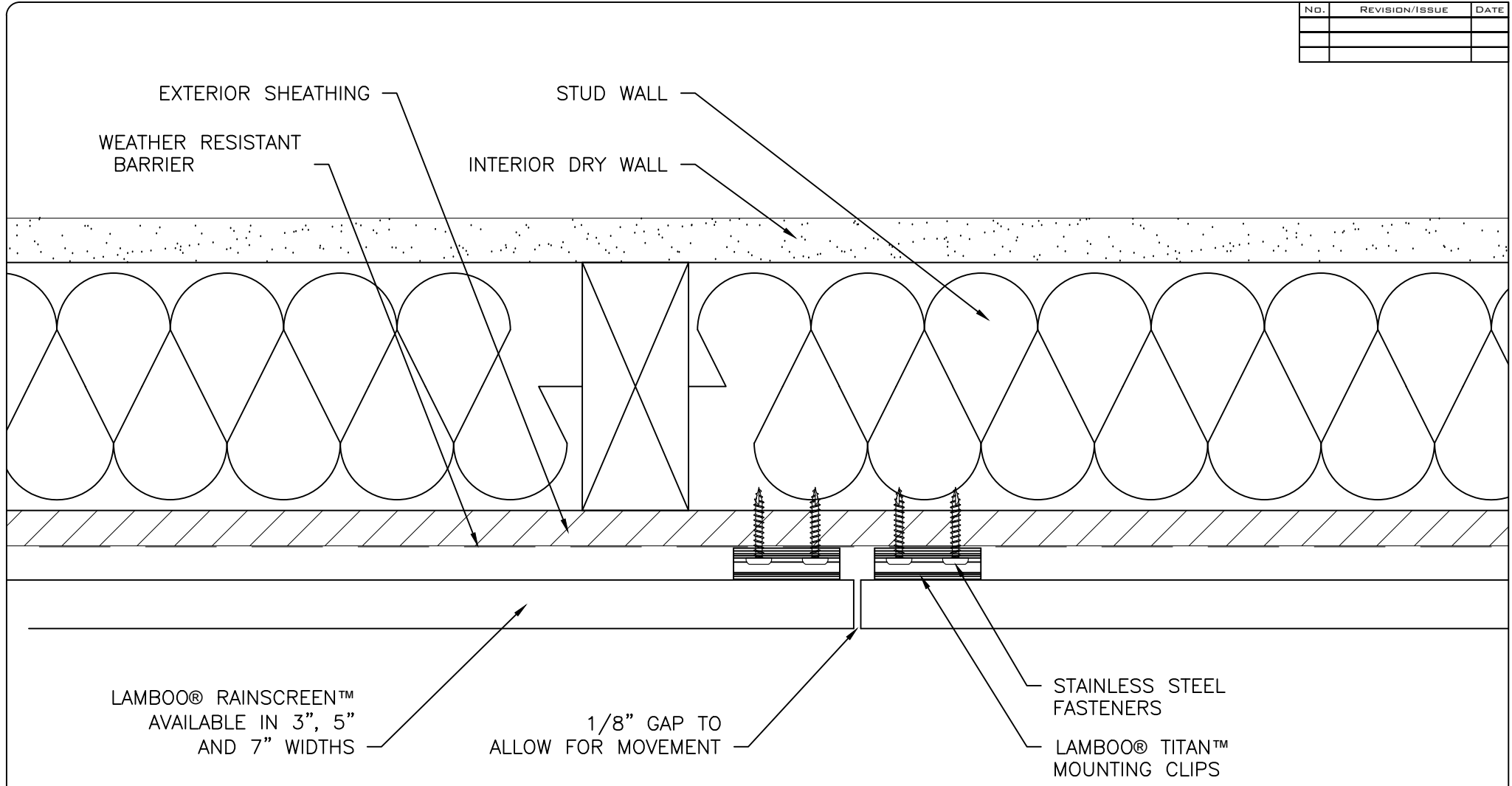
NOTE:  
 POSITION MOUNTING CLIPS AT END OF  
 BOARD NEAREST INSIDE OR OUTSIDE  
 CORNER CONDITIONS

DISCLAIMER:  
 ALL INFORMATION CONTAINED WITHIN THIS DOCUMENT IS SOLE PROPERTY OF LAMBOO TECHNOLOGIES, LLC. ANY REPRODUCTION  
 IN PART OR AS A WHOLE WITHOUT THE WRITTEN PERMISSION OF LAMBOO TECHNOLOGIES, LLC IS STRICTLY PROHIBITED.

TITLE:DETAIL 6B  
 INSIDE CORNER DETAIL

DRAWN BY: <b>CJC</b>	SHEET
DATE: 02/04/2020	<b>11</b>
SCALE: 6" = 1'-0"	

NO.	REVISION/ISSUE	DATE



**NOTE:**  
PLACE THE TITAN MOUNTING CLIPS AS  
CLOSE TO THE END OF THE PIECE TO  
PROVIDE THE MOST SUPPORT FOR THE  
RAINSCREEN SYSTEM

**NOTE:** ALL CUT EDGES MUST BE  
SEALED PRIOR TO INSTALLATION

DISCLAIMER:  
ALL INFORMATION CONTAINED WITHIN THIS DOCUMENT IS SOLE PROPERTY OF LAMBOO TECHNOLOGIES, LLC. ANY REPRODUCTION  
IN PART OR AS A WHOLE WITHOUT THE WRITTEN PERMISSION OF LAMBOO TECHNOLOGIES, LLC IS STRICTLY PROHIBITED.

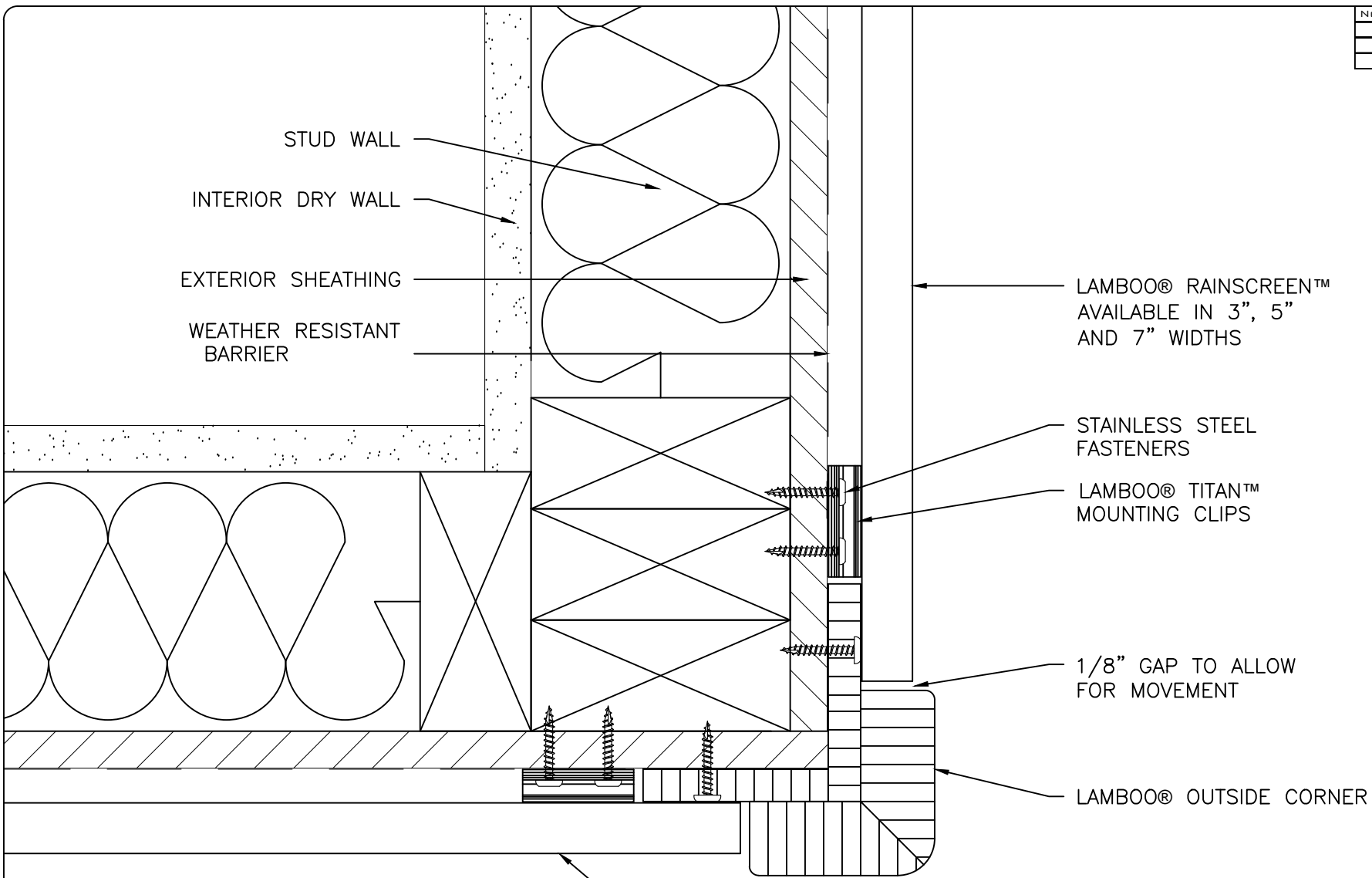
**TITLE:DETAIL 7  
BUTT JOINT DETAIL**

<b>DRAWN BY:</b> CJC	<b>SHEET</b>
<b>DATE:</b> 02/04/2020	<b>12</b>
<b>SCALE:</b> 6" = 1'-0"	



311 W. EDWARDS STREET/LITCHFIELD, IL 62056 P:866-966-2999  
E:ADMIN@LAMBOO.US W: WWW.LAMBOO.US

NO.	REVISION/ISSUE	DATE



STUD WALL  
 INTERIOR DRY WALL  
 EXTERIOR SHEATHING  
 WEATHER RESISTANT BARRIER

LAMBOO® RAINSCREEN™  
 AVAILABLE IN 3", 5"  
 AND 7" WIDTHS

STAINLESS STEEL  
 FASTENERS  
 LAMBOO® TITAN™  
 MOUNTING CLIPS

1/8" GAP TO ALLOW  
 FOR MOVEMENT

LAMBOO® OUTSIDE CORNER

NOTE:  
 POSITION MOUNTING CLIPS AT END OF  
 BOARD NEAREST INSIDE OR OUTSIDE  
 CORNER CONDITIONS

LAMBOO® RAINSCREEN™  
 AVAILABLE IN 3", 5"  
 AND 7" WIDTHS

NOTE: ALL CUT EDGES MUST BE  
 SEALED PRIOR TO INSTALLATION

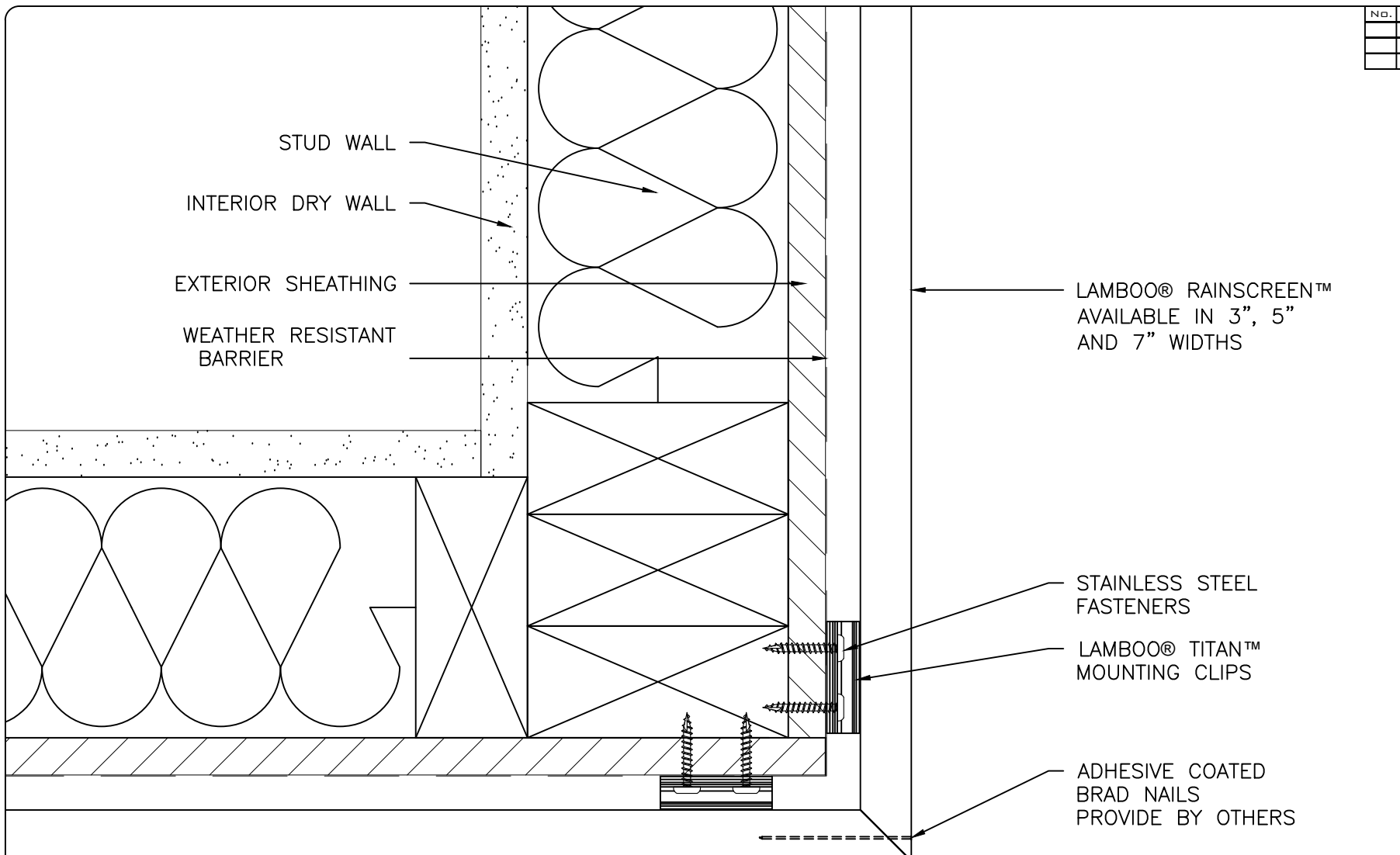
DISCLAIMER:  
 ALL INFORMATION CONTAINED WITHIN THIS DOCUMENT IS SOLE PROPERTY OF LAMBOO TECHNOLOGIES, LLC. ANY REPRODUCTION  
 IN PART OR AS A WHOLE WITHOUT THE WRITTEN PERMISSION OF LAMBOO TECHNOLOGIES, LLC IS STRICTLY PROHIBITED.

TITLE:DETAIL 8A  
 OUTSIDE CORNER DETAIL

DRAWN BY:  
**CJC**  
 DATE:  
 02/04/2020  
 SCALE:  
 6" = 1'-0"

SHEET  
**13**

NO.	REVISION/ISSUE	DATE



STUD WALL  
 INTERIOR DRY WALL  
 EXTERIOR SHEATHING  
 WEATHER RESISTANT BARRIER

LAMBOO® RAINSCREEN™  
 AVAILABLE IN 3", 5"  
 AND 7" WIDTHS

STAINLESS STEEL  
 FASTENERS  
 LAMBOO® TITAN™  
 MOUNTING CLIPS

ADHESIVE COATED  
 BRAD NAILS  
 PROVIDE BY OTHERS

45 DEGREE MITERED OUTSIDE  
 CORNER

LAMBOO® RAINSCREEN™  
 AVAILABLE IN 3", 5"  
 AND 7" WIDTHS

NOTE:  
 POSITION MOUNTING CLIPS AT END OF  
 BOARD NEAREST INSIDE OR OUTSIDE  
 CORNER CONDITIONS

NOTE: ALL CUT EDGES MUST BE  
 SEALED PRIOR TO INSTALLATION

DISCLAIMER:  
 ALL INFORMATION CONTAINED WITHIN THIS DOCUMENT IS SOLE PROPERTY OF LAMBOO TECHNOLOGIES, LLC. ANY REPRODUCTION  
 IN PART OR AS A WHOLE WITHOUT THE WRITTEN PERMISSION OF LAMBOO TECHNOLOGIES, LLC IS STRICTLY PROHIBITED.

TITLE:DETAIL 8B  
 OUTSIDE CORNER DETAIL

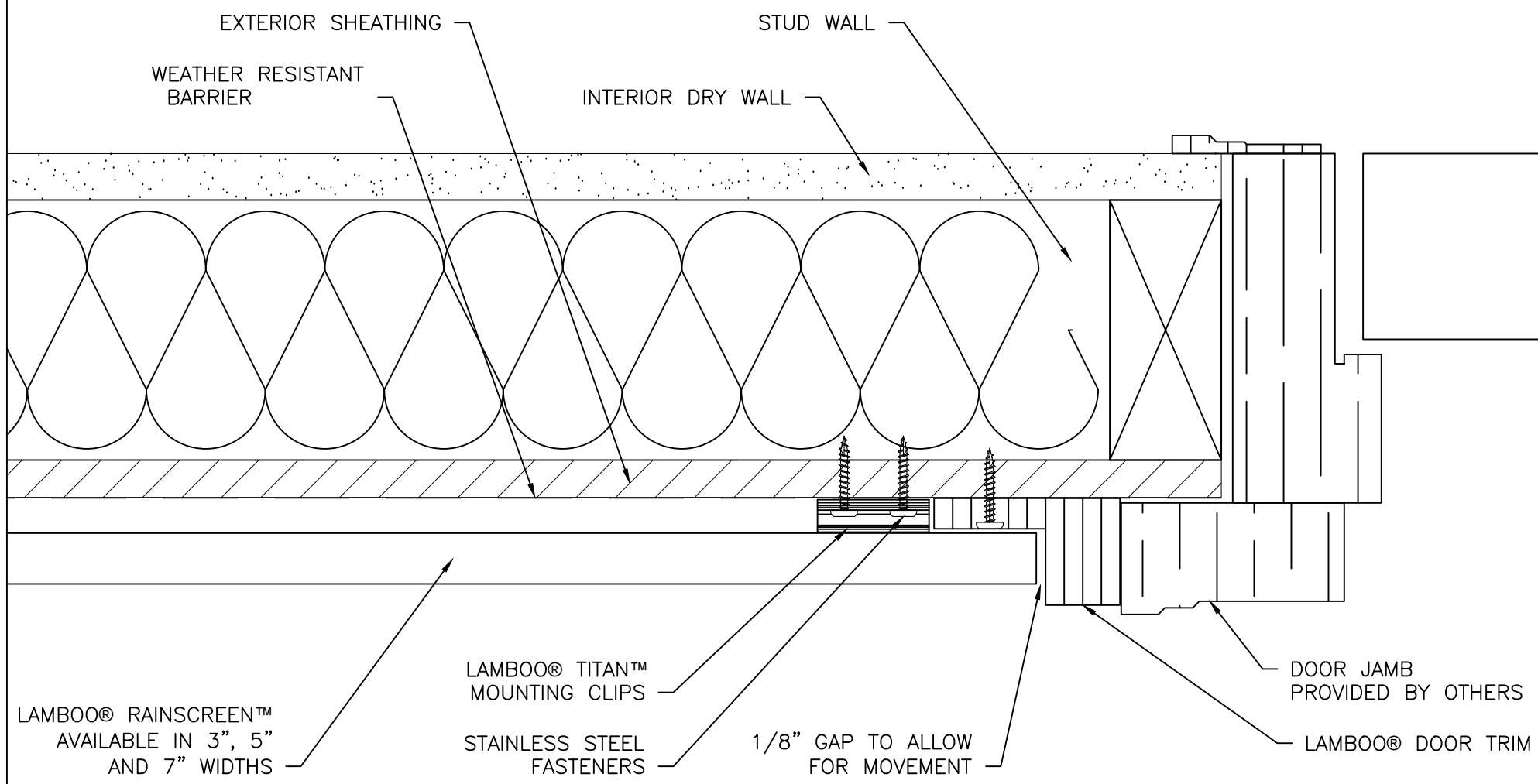
DRAWN BY:  
**CJC**  
 DATE:  
 02/04/2020  
 SCALE:  
 6" = 1'-0"

SHEET  
**14**



311 W. EDWARDS STREET/LITCHFIELD, IL 62056 P:866-966-2999  
 E:ADMIN@LAMBOO.US W: WWW.LAMBOO.US

NO.	REVISION/ISSUE	DATE



**NOTE:**  
PLACE THE TITAN MOUNTING CLIPS AS  
CLOSE TO THE END OF THE PIECE TO  
PROVIDE THE MOST SUPPORT FOR THE  
RAINSCREEN SYSTEM

**NOTE:** ALL CUT EDGES MUST BE  
SEALED PRIOR TO INSTALLATION

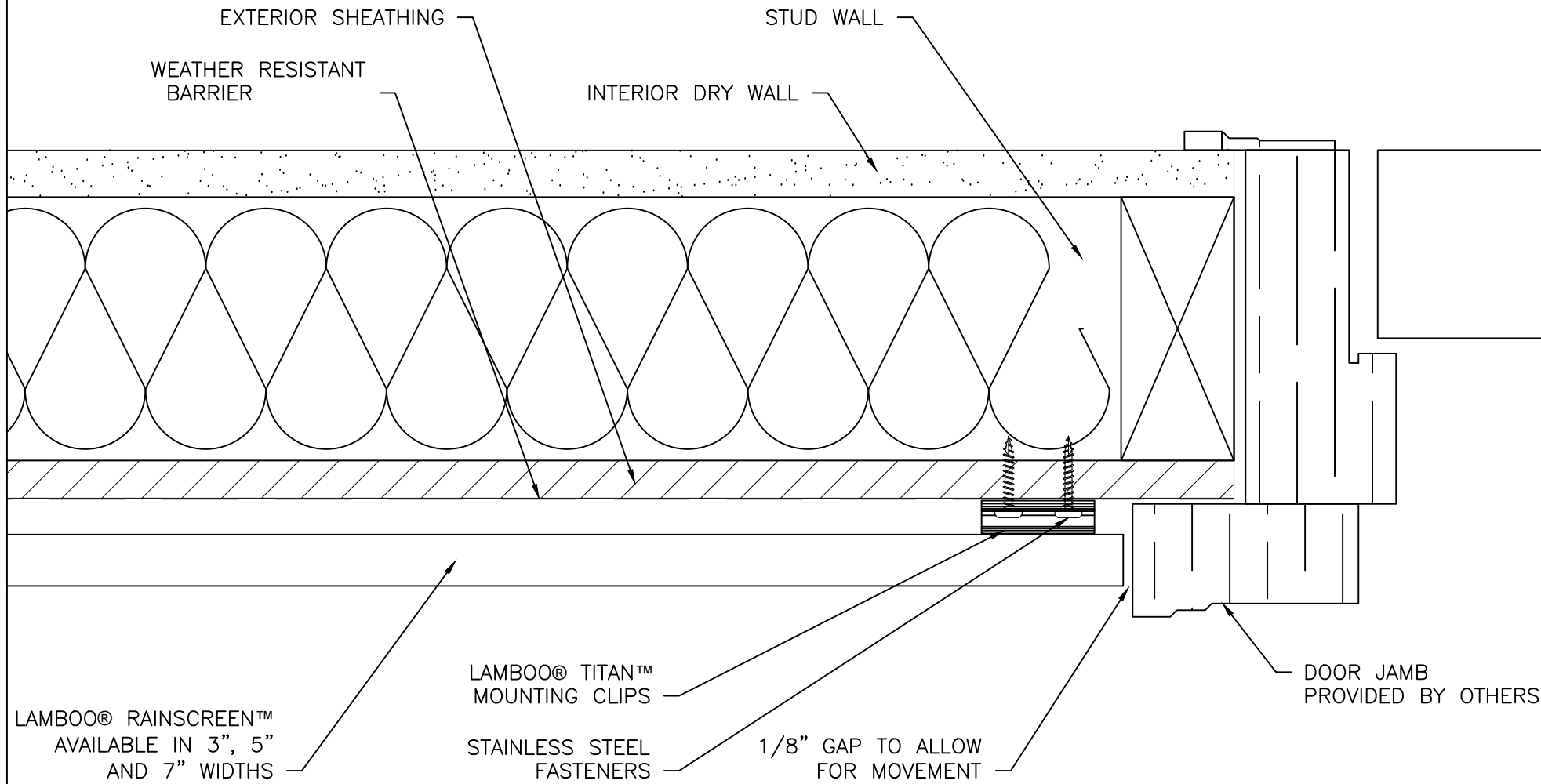
DISCLAIMER:  
ALL INFORMATION CONTAINED WITHIN THIS DOCUMENT IS SOLE PROPERTY OF LAMBOO TECHNOLOGIES, LLC. ANY REPRODUCTION  
IN PART OR AS A WHOLE WITHOUT THE WRITTEN PERMISSION OF LAMBOO TECHNOLOGIES, LLC IS STRICTLY PROHIBITED.

**TITLE:DETAIL 9A  
DOOR JAMB DETAIL**

**DRAWN BY:**  
CJC  
**DATE:**  
02/04/2020  
**SCALE:**  
6" = 1'-0"

**SHEET**  
**15**

NO.	REVISION/ISSUE	DATE



**NOTE:**  
 PLACE THE TITAN MOUNTING CLIPS AS CLOSE TO THE END OF THE PIECE TO PROVIDE THE MOST SUPPORT FOR THE RAINSCREEN SYSTEM

**NOTE:** ALL CUT EDGES MUST BE SEALED PRIOR TO INSTALLATION

DISCLAIMER:  
 ALL INFORMATION CONTAINED WITHIN THIS DOCUMENT IS SOLE PROPERTY OF LAMBOO TECHNOLOGIES, LLC. ANY REPRODUCTION IN PART OR AS A WHOLE WITHOUT THE WRITTEN PERMISSION OF LAMBOO TECHNOLOGIES, LLC IS STRICTLY PROHIBITED.

**TITLE:DETAIL 9B  
 DOOR JAMB DETAIL**

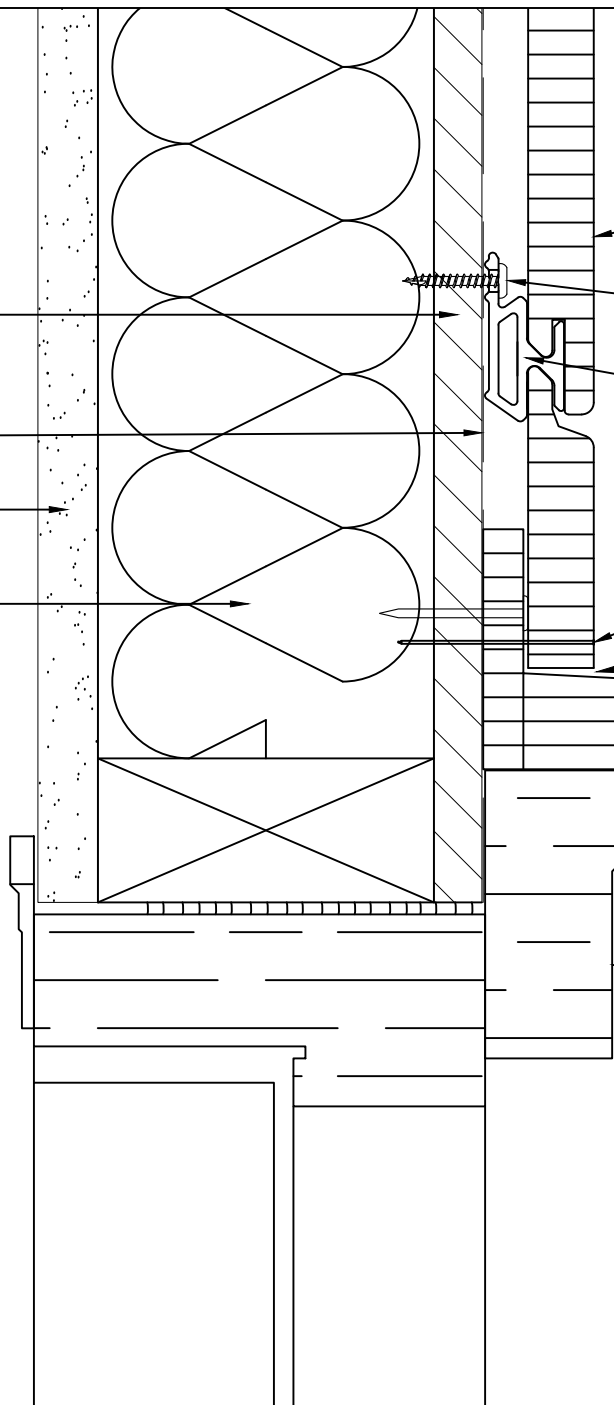
**DRAWN BY:**  
 CJC  
**DATE:**  
 02/04/2020  
**SCALE:**  
 6" = 1'-0"

**SHEET**  
 16



NO.	REVISION/ISSUE	DATE

EXTERIOR SHEATHING  
 WEATHER RESISTANT BARRIER  
 INTERIOR DRY WALL  
 STUD WALL



LAMBOO® RAINSCREEN™  
 AVAILABLE IN 3", 5"  
 AND 7" WIDTHS

STAINLESS STEEL FASTENERS

LAMBOO® TITAN™  
 MOUNTING CLIPS

ADHESIVE COATED  
 BRAD NAILS  
 PROVIDED BY OTHERS

1/8" GAP TO ALLOW  
 FOR MOVEMENT

LAMBOO® DOOR TRIM  
 3-5 DEGREE BEVEL TO ALLOW  
 FOR WATER DRAINAGE

DOOR JAMB  
 PROVIDED BY OTHERS

NOTE: ALL CUT EDGES MUST BE  
 SEALED PRIOR TO INSTALLATION

DISCLAIMER:  
 ALL INFORMATION CONTAINED WITHIN THIS DOCUMENT IS SOLE PROPERTY OF LAMBOO TECHNOLOGIES, LLC. ANY REPRODUCTION  
 IN PART OR AS A WHOLE WITHOUT THE WRITTEN PERMISSION OF LAMBOO TECHNOLOGIES, LLC IS STRICTLY PROHIBITED.

TITLE:DETAIL 10A  
 DOOR HEAD DETAIL

DRAWN BY: CJC	SHEET
DATE: 02/04/2020	17
SCALE: 6" = 1'-0"	

NO.	REVISION/ISSUE	DATE

EXTERIOR SHEATHING

WEATHER RESISTANT BARRIER

INTERIOR DRY WALL

STUD WALL

LAMBOO® RAINSCREEN™  
AVAILABLE IN 3", 5"  
AND 7" WIDTHS

STAINLESS STEEL FASTENERS

LAMBOO® TITAN™  
MOUNTING CLIPS

BLOCKING  
PROVIDED BY OTHERS

ADHESIVE COATED  
BRAD NAILS  
PROVIDED BY OTHERS

1/8" GAP TO ALLOW  
FOR MOVEMENT

DOOR JAMB  
PROVIDED BY OTHERS

NOTE: ALL CUT EDGES MUST BE  
SEALED PRIOR TO INSTALLATION

DISCLAIMER:  
ALL INFORMATION CONTAINED WITHIN THIS DOCUMENT IS SOLE PROPERTY OF LAMBOO TECHNOLOGIES, LLC. ANY REPRODUCTION  
IN PART OR AS A WHOLE WITHOUT THE WRITTEN PERMISSION OF LAMBOO TECHNOLOGIES, LLC IS STRICTLY PROHIBITED.

TITLE:DETAIL 10B  
DOOR HEAD DETAIL

DRAWN BY:  
CJC  
DATE:  
02/04/2020  
SCALE:  
6" = 1'-0"

SHEET  
18



311 W. EDWARDS STREET/LITCHFIELD, IL 62056 P:866-966-2999  
E:ADMIN@LAMBOO.US W: WWW.LAMBOO.US