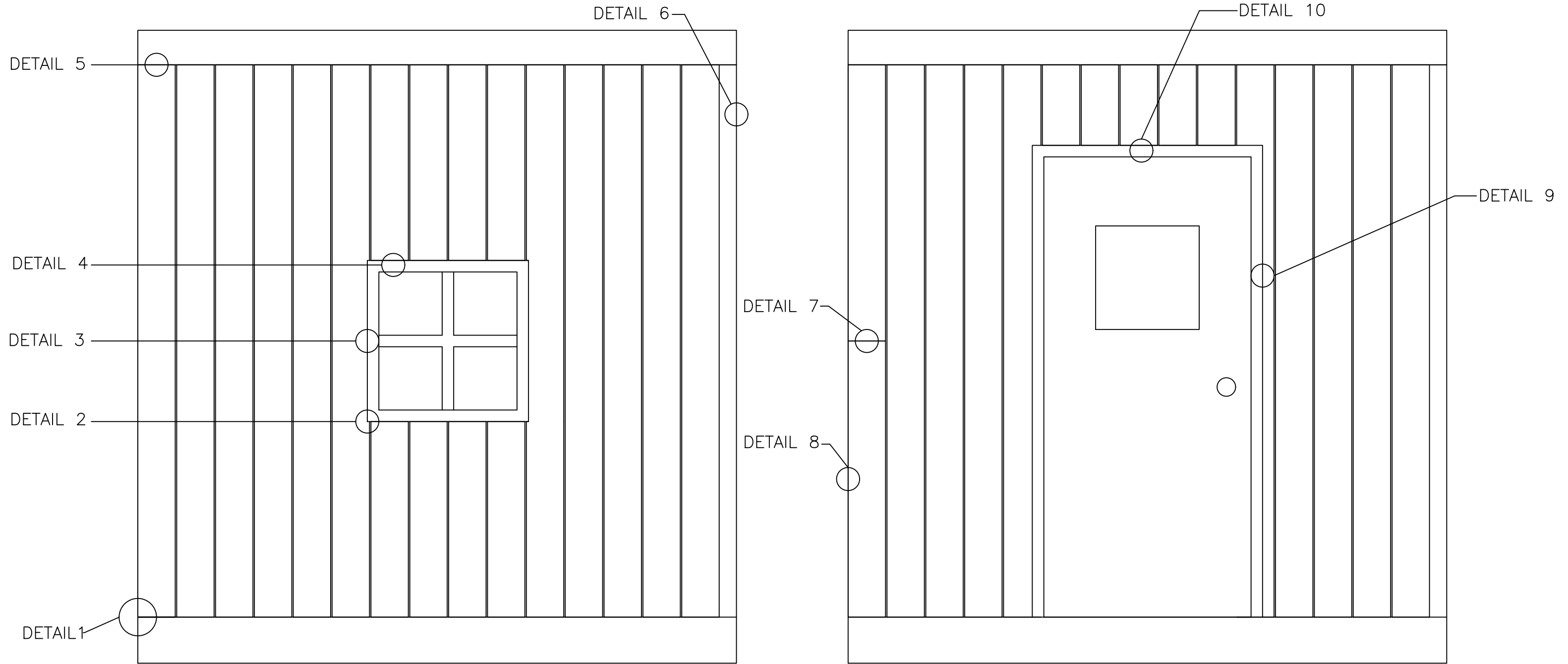


NO.	REVISION/ISSUE	DATE



SYSTEM NOTES:

- MAXIMUM VERTICAL HEIGHT OF RAINSCREEN PER 8'-0" HORIZONTAL SPAN IS EQUAL TO 16'-0"
- ALL DETAILS BASED ON TYPICAL CONDITIONS. ANY SPECIAL CONDITIONS MUST BE PROVIDED TO LAMBOO TO EVALUATE AND APPROVE
- DESIGN OPTIONS BEYOND WHAT IS PRESENTED IN THESE DETAILS MUST BE APPROVED BY LAMBOO PRIOR TO FINAL DRAWINGS

DISCLAIMER:
ALL INFORMATION CONTAINED WITHIN THIS DOCUMENT IS SOLE PROPERTY OF LAMBOO TECHNOLOGIES, LLC. ANY REPRODUCTION IN PART OR AS A WHOLE WITHOUT THE WRITTEN PERMISSION OF LAMBOO TECHNOLOGIES, LLC IS STRICTLY PROHIBITED.

**TITLE: LAMBOO® RAINSCREEN EXTERIOR
WALL ASSEMBLY-VERTICAL INSTALLATION**

DRAWN BY: JDH	SHEET 1
DATE: 09/21/2022	
SCALE: NTS	



301 W. EDWARDS STREET/LITCHFIELD, IL 62056 P:866-966-2999
E:ADMIN@LAMBOO.US W: WWW.LAMBOO.US

NO.	REVISION/ISSUE	DATE

TABLE OF CONTENTS

TABLE OF CONTENTS (SHEET) 2

DETAIL 1: (SHEET 3) STARTING DETAIL

DETAIL 2:

2A - (SHEET 4) WINDOW SILL DETAIL

2B - (SHEET 5) WINDOW SILL DETAIL

2C - (SHEET 6) WINDOW SILL DETAIL

DETAIL 3:

3A - (SHEET 7) WINDOW JAMB DETAIL

3B - (SHEET 8) WINDOW JAMB DETAIL

DETAIL 4: (SHEET 9) WINDOW HEAD DETAIL

DETAIL 5: (SHEET 10) SOFFIT/FASCIA DETAIL

DETAIL 6:

6A - (SHEET 11) INSIDE CORNER DETAIL

6B - (SHEET 12) INSIDE CORNER DETAIL

DETAIL 7:

7A - (SHEET 13) BUTT JOINT DETAIL

7B - (SHEET 14) BUTT JOINT DETAIL

DETAIL 8:

8A - (SHEET 15) OUTSIDE CORNER DETAIL

8B - (SHEET 16) OUTSIDE CORNER DETAIL

DETAIL 9:

9A - (SHEET 17) DOOR JAMB DETAIL

9B - (SHEET 18) DOOR JAMB DETAIL

DETAIL 10: (SHEET 19) DOOR HEAD DETAIL

DISCLAIMER:
ALL INFORMATION CONTAINED WITHIN THIS DOCUMENT IS SOLE PROPERTY OF LAMBOO TECHNOLOGIES, LLC. ANY REPRODUCTION
IN PART OR AS A WHOLE WITHOUT THE WRITTEN PERMISSION OF LAMBOO TECHNOLOGIES, LLC IS STRICTLY PROHIBITED.

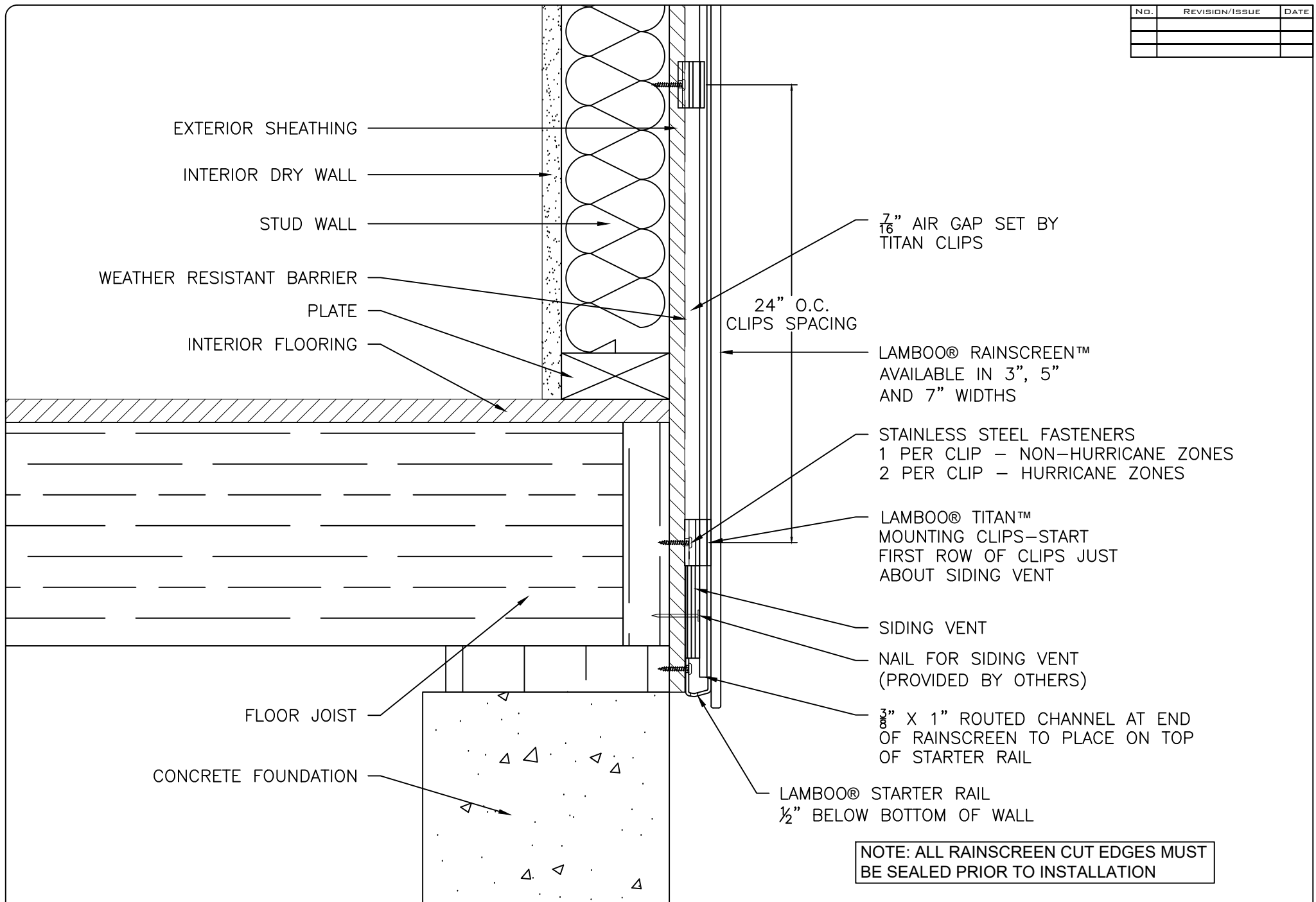
TITLE: TABLE OF CONTENETS

<small>DRAWN BY:</small> JDH	2
<small>DATE:</small> 09/21/2022	
<small>SCALE:</small> NTS	



301 W. EDWARDS STREET/LITCHFIELD, IL 62056 P:866-966-2999
E:ADMIN@LAMBOO.US W: WWW.LAMBOO.US

NO.	REVISION/ISSUE	DATE



NOTE: ALL RAINSCREEN CUT EDGES MUST BE SEALED PRIOR TO INSTALLATION

DISCLAIMER:
 ALL INFORMATION CONTAINED WITHIN THIS DOCUMENT IS SOLE PROPERTY OF LAMBOO TECHNOLOGIES, LLC. ANY REPRODUCTION IN PART OR AS A WHOLE WITHOUT THE WRITTEN PERMISSION OF LAMBOO TECHNOLOGIES, LLC IS STRICTLY PROHIBITED.

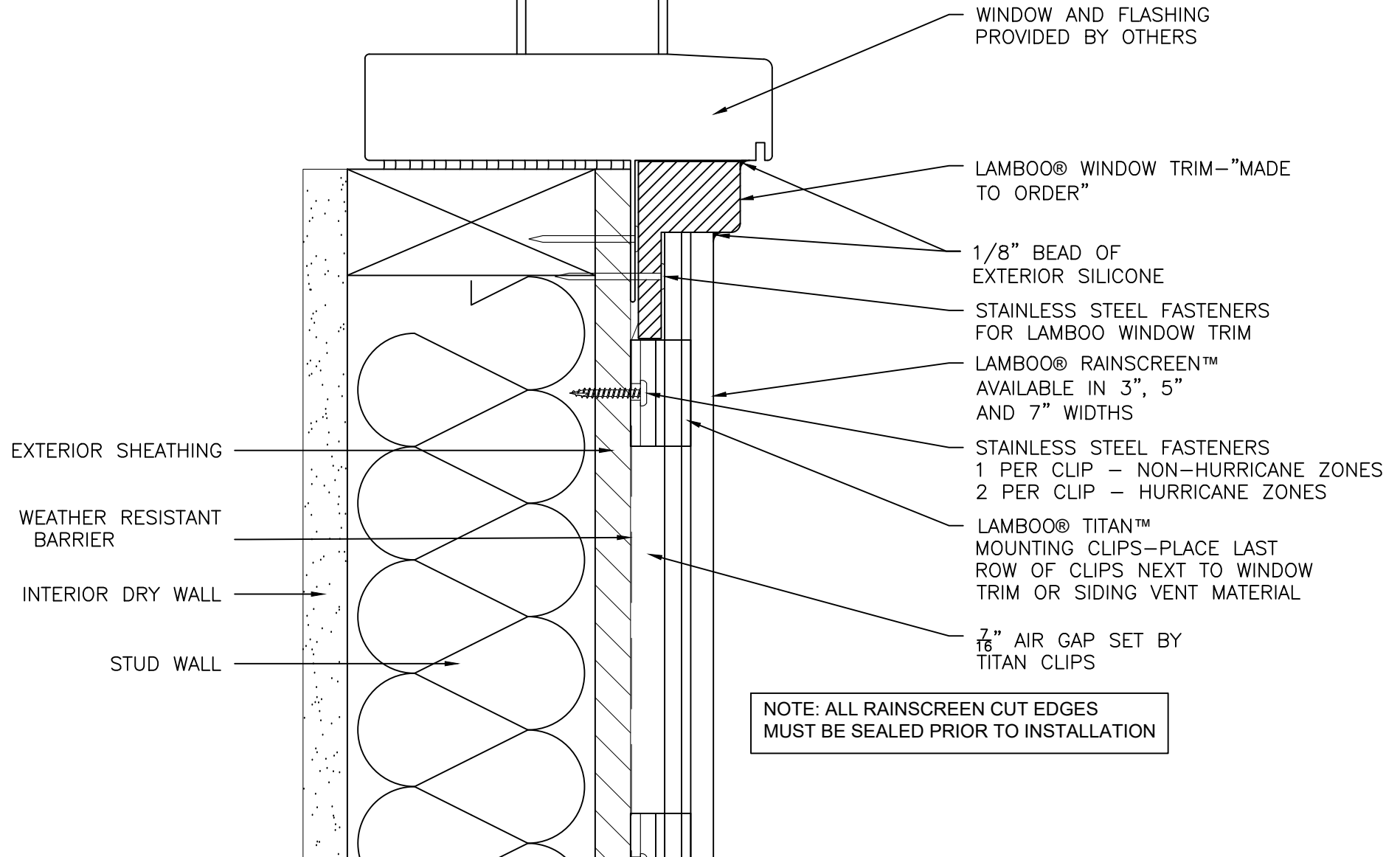
**TITLE: DETAIL 1
 VERTICAL STARTING
 DETAIL**

DRAWN BY: JDH	SHEET
DATE: 09/21/2022	3
SCALE: 3" = 1'-0"	



301 W. EDWARDS STREET/LITCHFIELD, IL 62056 P:866-966-2999
 E:ADMIN@LAMBOO.US W: WWW.LAMBOO.US

NO.	REVISION/ISSUE	DATE

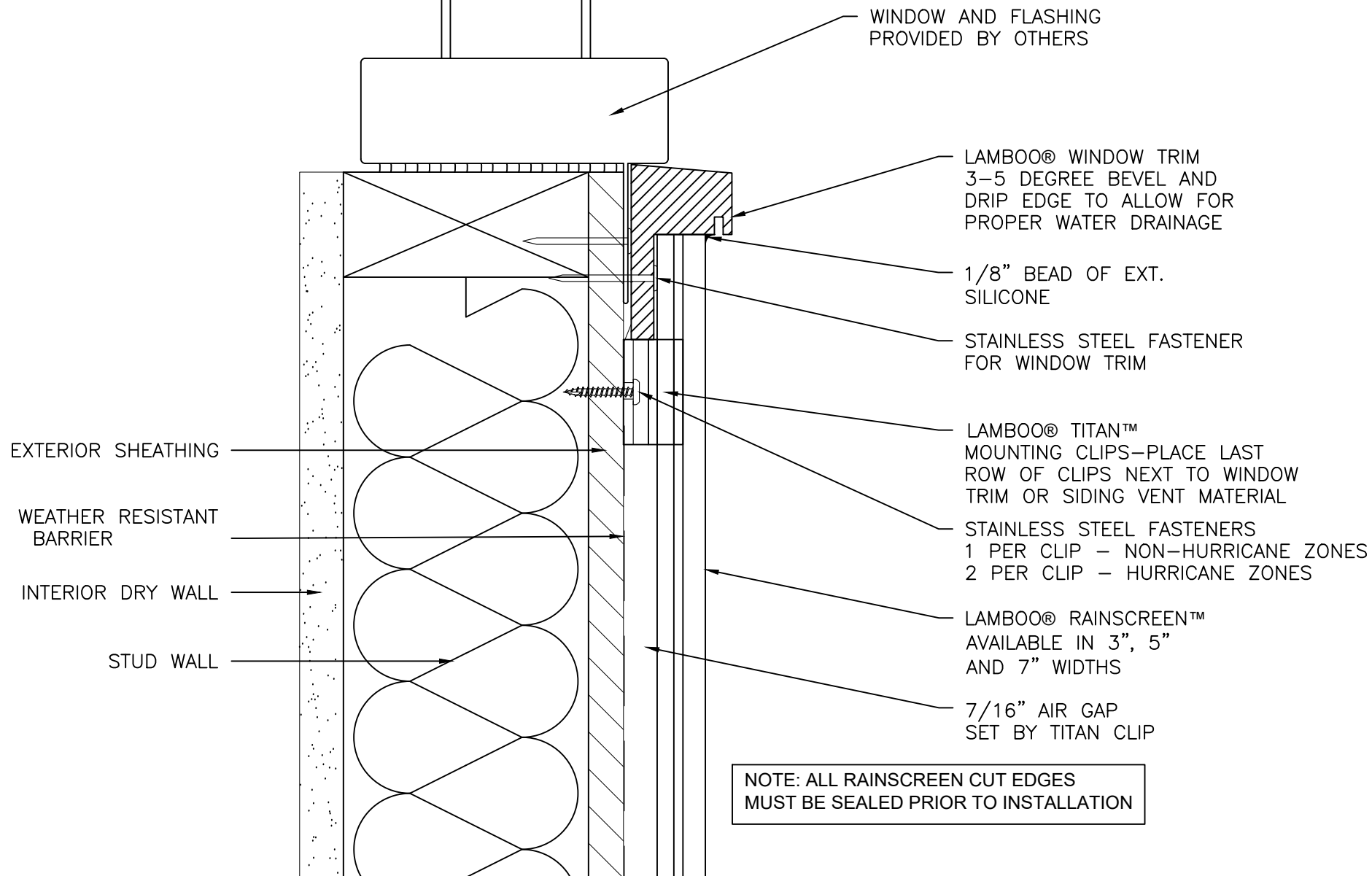


DISCLAIMER:
ALL INFORMATION CONTAINED WITHIN THIS DOCUMENT IS SOLE PROPERTY OF LAMBOO TECHNOLOGIES, LLC. ANY REPRODUCTION IN PART OR AS A WHOLE WITHOUT THE WRITTEN PERMISSION OF LAMBOO TECHNOLOGIES, LLC IS STRICTLY PROHIBITED.

TITLE:DETAIL 2A
WINDOW SILL DETAIL

DRAWN BY: JDH	SHEET
DATE: 09/21/2022	4
SCALE: 6" = 1'-0"	

NO.	REVISION/ISSUE	DATE



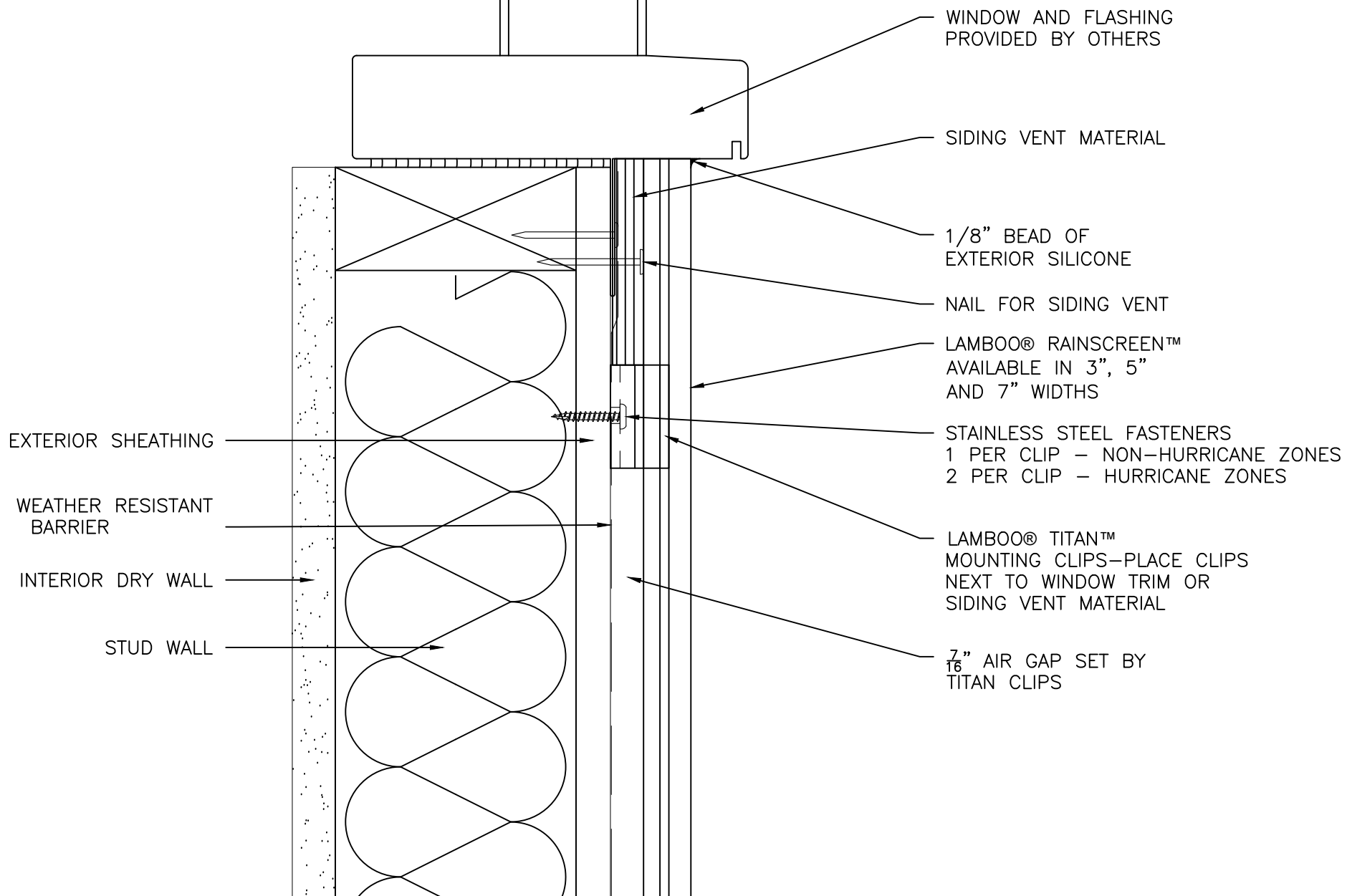
NOTE: ALL RAINSCREEN CUT EDGES
MUST BE SEALED PRIOR TO INSTALLATION

DISCLAIMER:
ALL INFORMATION CONTAINED WITHIN THIS DOCUMENT IS SOLE PROPERTY OF LAMBOO TECHNOLOGIES, LLC. ANY REPRODUCTION
IN PART OR AS A WHOLE WITHOUT THE WRITTEN PERMISSION OF LAMBOO TECHNOLOGIES, LLC IS STRICTLY PROHIBITED.

TITLE: DETAIL 2B
WINDOW SILL DETAIL

DRAWN BY: JDH	SHEET
DATE: 09/21/2022	5
SCALE: 6" = 1'-0"	

NO.	REVISION/ISSUE	DATE



DISCLAIMER:
 ALL INFORMATION CONTAINED WITHIN THIS DOCUMENT IS SOLE PROPERTY OF LAMBOO TECHNOLOGIES, LLC. ANY REPRODUCTION
 IN PART OR AS A WHOLE WITHOUT THE WRITTEN PERMISSION OF LAMBOO TECHNOLOGIES, LLC IS STRICTLY PROHIBITED.

TITLE:DETAIL 2C
 WINDOW SILL DETAIL

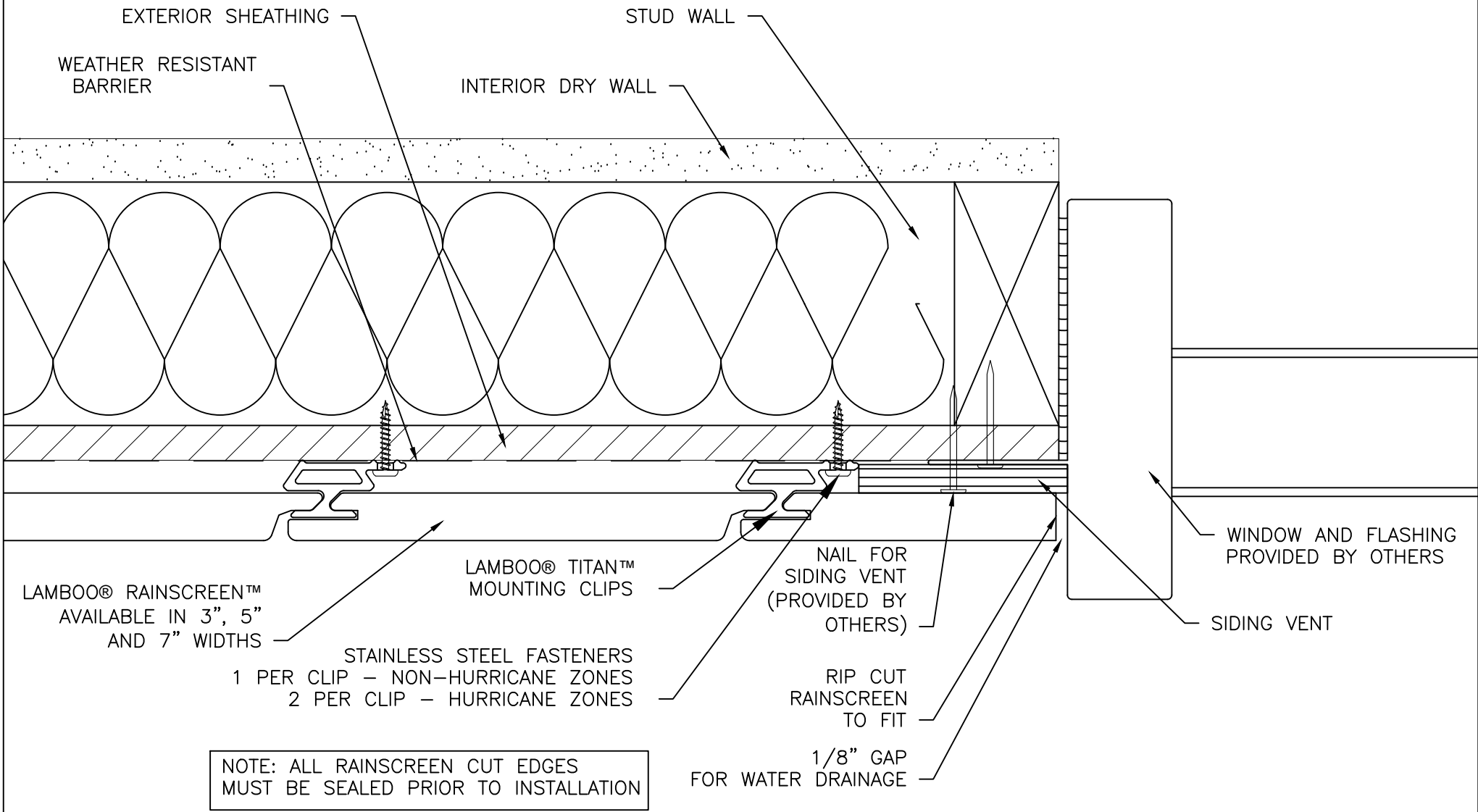
DRAWN BY:
 JDH
 DATE:
 09/21/2022
 SCALE:
 6" = 1'-0"

SHEET
 6



301 W. EDWARDS STREET/LITCHFIELD, IL 62056 P:866-966-2999
 E:ADMIN@LAMBOO.US W: WWW.LAMBOO.US

NO.	REVISION/ISSUE	DATE

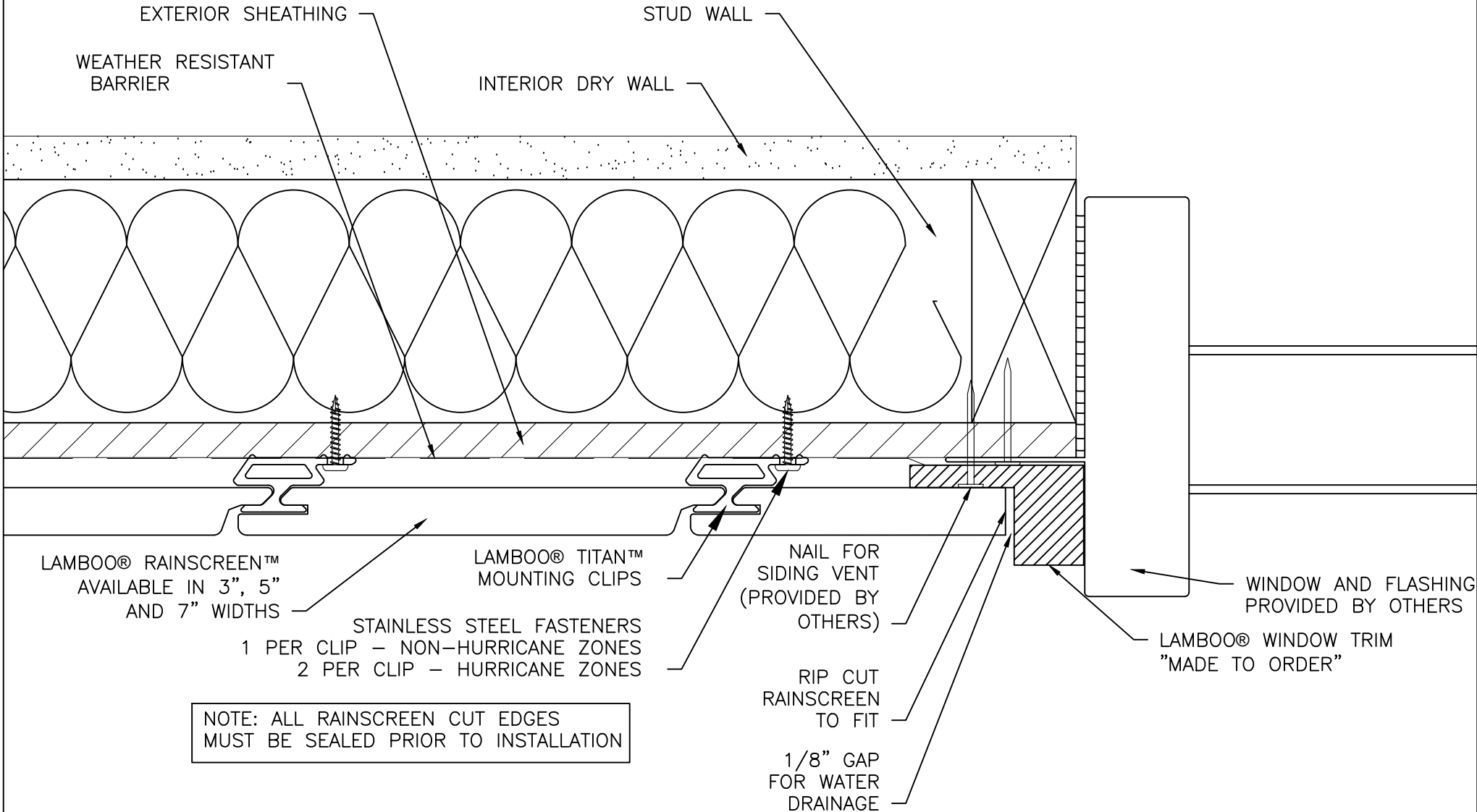


DISCLAIMER: ALL INFORMATION CONTAINED WITHIN THIS DOCUMENT IS SOLE PROPERTY OF LAMBOO TECHNOLOGIES, LLC. ANY REPRODUCTION IN PART OR AS A WHOLE WITHOUT THE WRITTEN PERMISSION OF LAMBOO TECHNOLOGIES, LLC IS STRICTLY PROHIBITED.

TITLE:DETAIL 3A
WINDOW JAMB DETAIL

DRAWN BY: JDH	SHEET
DATE: 09/21/2022	7
SCALE: 6" = 1'-0"	

NO.	REVISION/ISSUE	DATE



NOTE: ALL RAINSCREEN CUT EDGES MUST BE SEALED PRIOR TO INSTALLATION

DISCLAIMER: ALL INFORMATION CONTAINED WITHIN THIS DOCUMENT IS SOLE PROPERTY OF LAMBOO TECHNOLOGIES, LLC. ANY REPRODUCTION IN PART OR AS A WHOLE WITHOUT THE WRITTEN PERMISSION OF LAMBOO TECHNOLOGIES, LLC IS STRICTLY PROHIBITED.

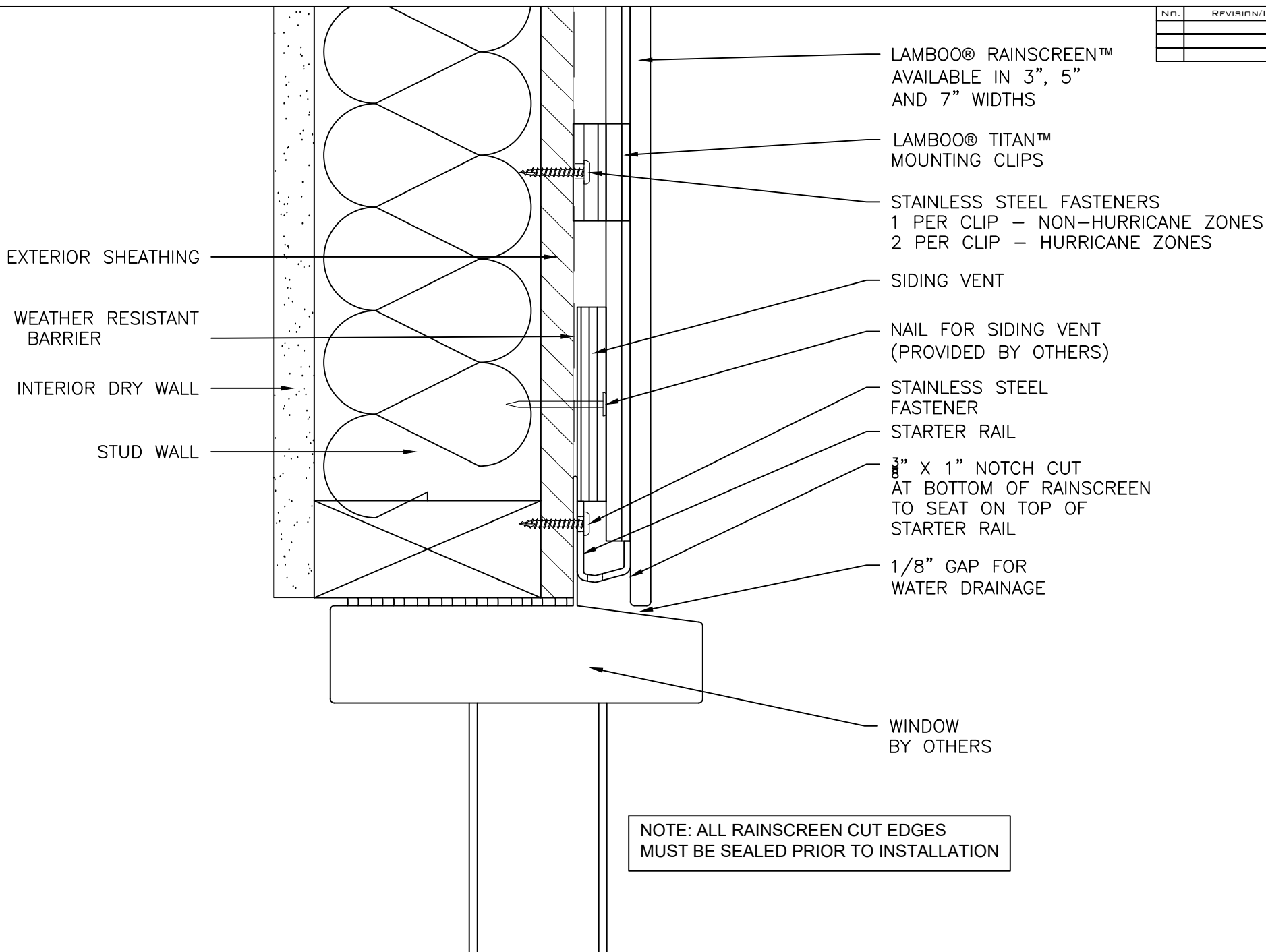
TITLE:DETAIL 3B
WINDOW JAMB DETAIL

DRAWN BY: JDH	SHEET
DATE: 09/21/2022	8
SCALE: 6" = 1'-0"	



301 W. EDWARDS STREET/LITCHFIELD, IL 62056 P:866-966-2999
 E:ADMIN@LAMBOO.US W: WWW.LAMBOO.US

NO.	REVISION/ISSUE	DATE



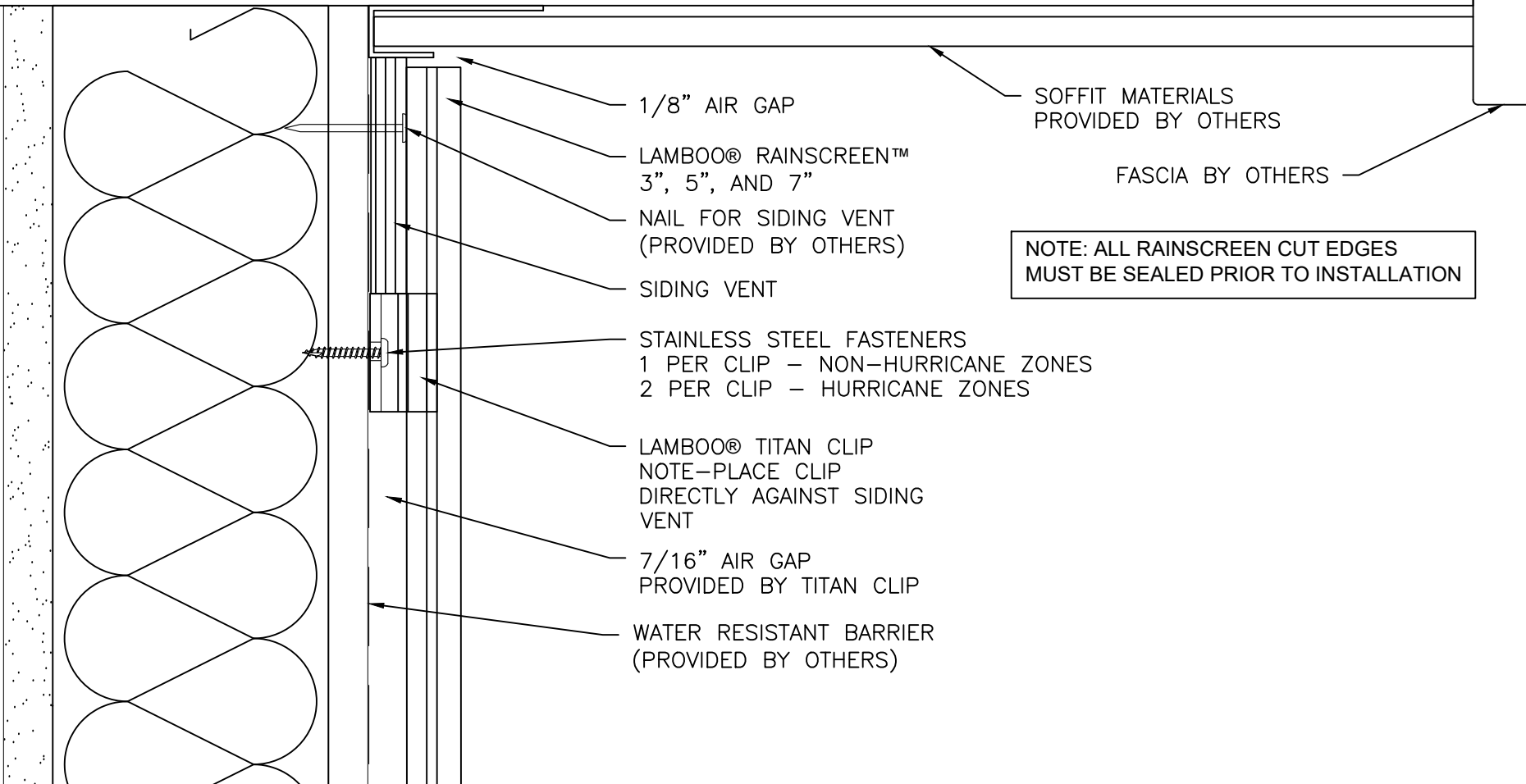
NOTE: ALL RAINSCREEN CUT EDGES MUST BE SEALED PRIOR TO INSTALLATION

DISCLAIMER: ALL INFORMATION CONTAINED WITHIN THIS DOCUMENT IS SOLE PROPERTY OF LAMBOO TECHNOLOGIES, LLC. ANY REPRODUCTION IN PART OR AS A WHOLE WITHOUT THE WRITTEN PERMISSION OF LAMBOO TECHNOLOGIES, LLC IS STRICTLY PROHIBITED.

TITLE:DETAIL 4
WINDOW HEAD DETAIL

DRAWN BY: JDH	SHEET
DATE: 09/21/2022	9
SCALE: 6" = 1'-0"	

NO.	REVISION/ISSUE	DATE



1/8" AIR GAP

LAMBOO® RAINSCREEN™
3", 5", AND 7"

NAIL FOR SIDING VENT
(PROVIDED BY OTHERS)

SIDING VENT

STAINLESS STEEL FASTENERS
1 PER CLIP - NON-HURRICANE ZONES
2 PER CLIP - HURRICANE ZONES

LAMBOO® TITAN CLIP
NOTE-PLACE CLIP
DIRECTLY AGAINST SIDING
VENT

7/16" AIR GAP
PROVIDED BY TITAN CLIP

WATER RESISTANT BARRIER
(PROVIDED BY OTHERS)

SOFFIT MATERIALS
PROVIDED BY OTHERS

FASCIA BY OTHERS

NOTE: ALL RAINSCREEN CUT EDGES
MUST BE SEALED PRIOR TO INSTALLATION

DISCLAIMER:
ALL INFORMATION CONTAINED WITHIN THIS DOCUMENT IS SOLE PROPERTY OF LAMBOO TECHNOLOGIES, LLC. ANY REPRODUCTION
IN PART OR AS A WHOLE WITHOUT THE WRITTEN PERMISSION OF LAMBOO TECHNOLOGIES, LLC IS STRICTLY PROHIBITED.

TITLE:DETAIL 5
SOFFIT / FASCIA DETAIL

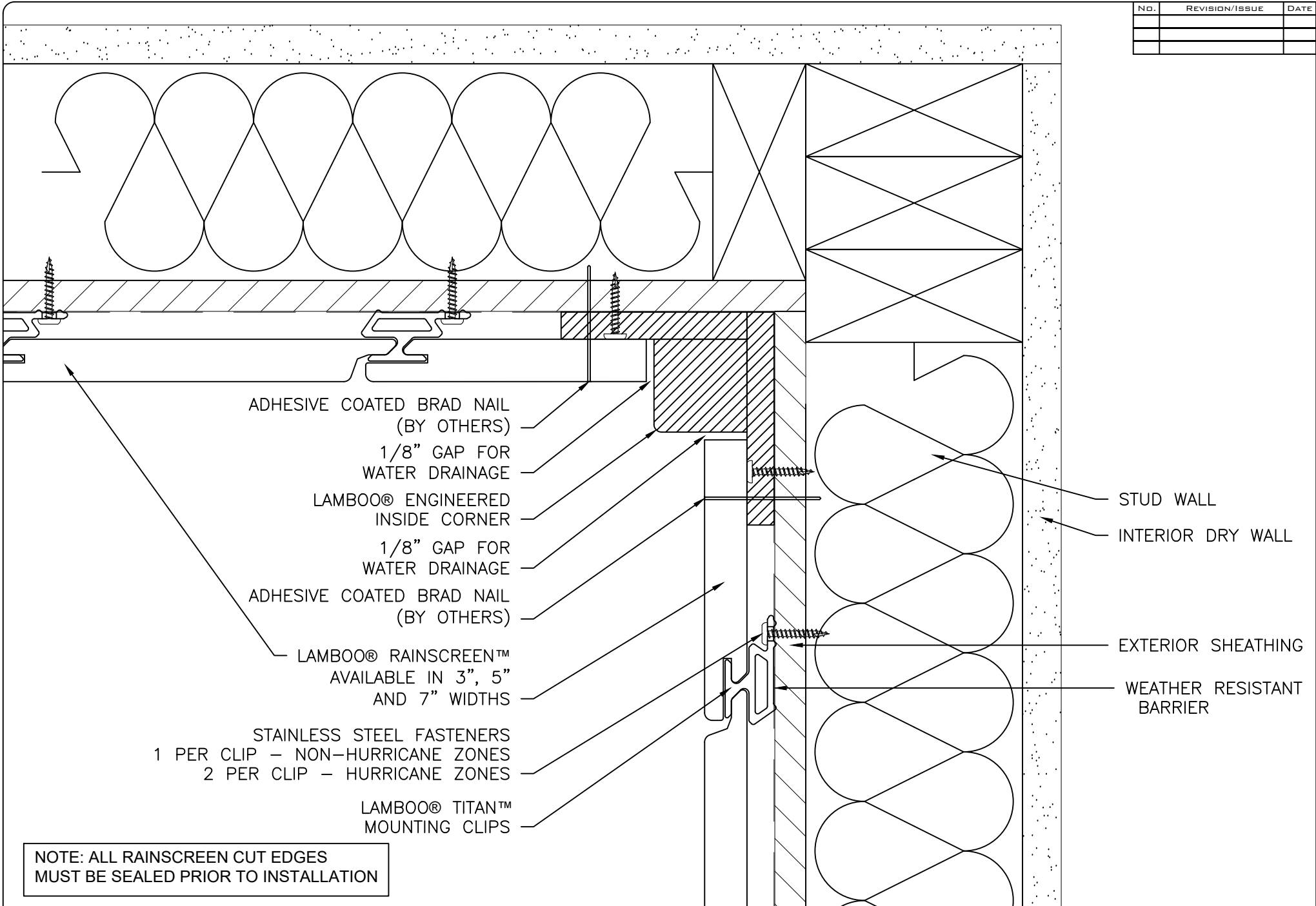
DRAWN BY:
JDH
DATE:
09/21/2022
SCALE:
6" = 1'-0"

SHEET
10



301 W. EDWARDS STREET/LITCHFIELD, IL 62056 P:866-966-2999
E:ADMIN@LAMBOO.US W: WWW.LAMBOO.US

NO.	REVISION/ISSUE	DATE

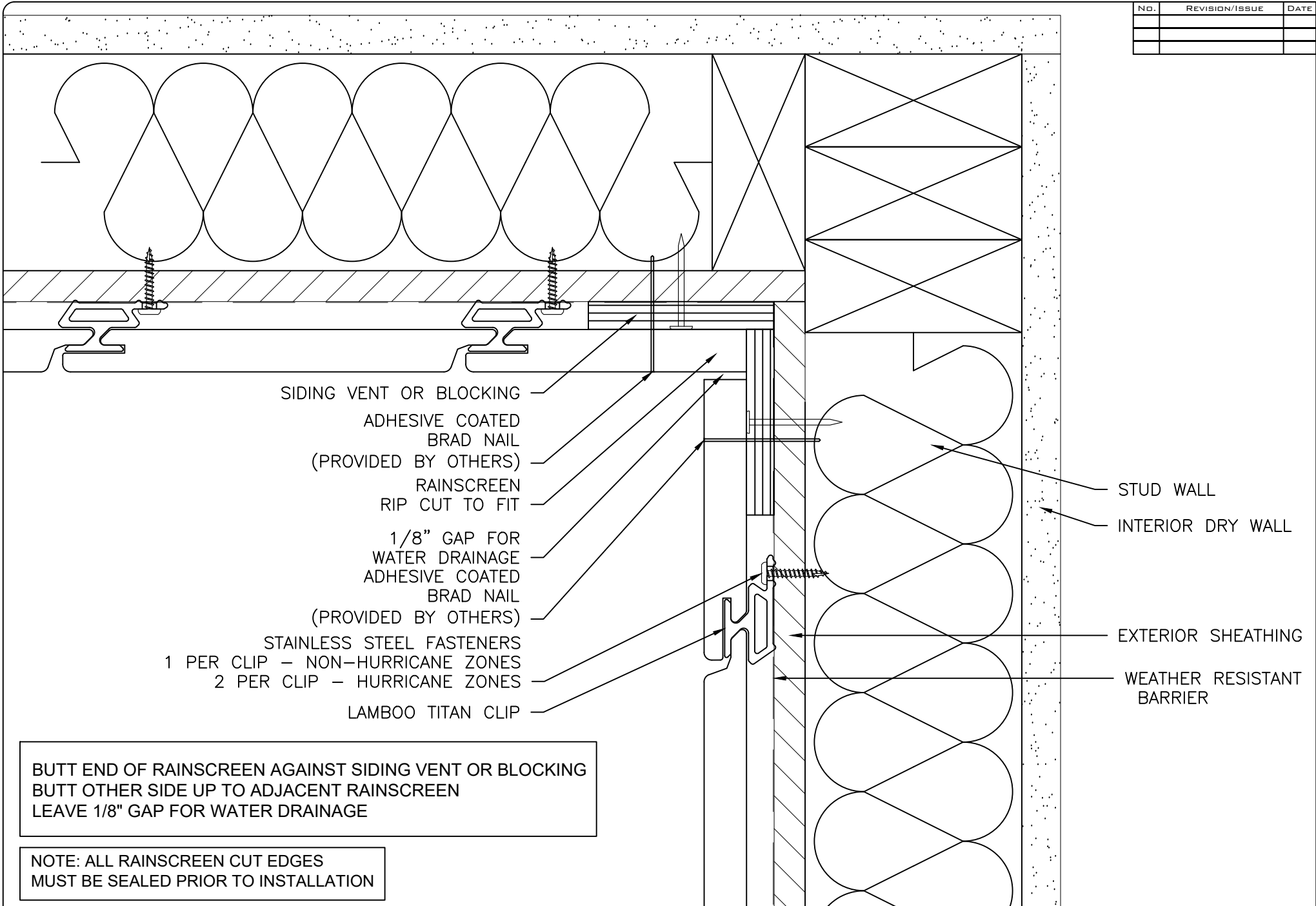


DISCLAIMER:
ALL INFORMATION CONTAINED WITHIN THIS DOCUMENT IS SOLE PROPERTY OF LAMBOO TECHNOLOGIES, LLC. ANY REPRODUCTION IN PART OR AS A WHOLE WITHOUT THE WRITTEN PERMISSION OF LAMBOO TECHNOLOGIES, LLC IS STRICTLY PROHIBITED.

TITLE: DETAIL 6A
INSIDE CORNER DETAIL

DRAWN BY: JDH	SHEET
DATE: 09/21/2022	11
SCALE: 6" = 1'-0"	

NO.	REVISION/ISSUE	DATE



- SIDING VENT OR BLOCKING
- ADHESIVE COATED BRAD NAIL (PROVIDED BY OTHERS)
- RAINSCREEN RIP CUT TO FIT
- 1/8" GAP FOR WATER DRAINAGE
- ADHESIVE COATED BRAD NAIL (PROVIDED BY OTHERS)
- STAINLESS STEEL FASTENERS
1 PER CLIP – NON-HURRICANE ZONES
2 PER CLIP – HURRICANE ZONES
- LAMBOO TITAN CLIP

- STUD WALL
- INTERIOR DRY WALL
- EXTERIOR SHEATHING
- WEATHER RESISTANT BARRIER

BUTT END OF RAINSCREEN AGAINST SIDING VENT OR BLOCKING
 BUTT OTHER SIDE UP TO ADJACENT RAINSCREEN
 LEAVE 1/8" GAP FOR WATER DRAINAGE

NOTE: ALL RAINSCREEN CUT EDGES
 MUST BE SEALED PRIOR TO INSTALLATION

DISCLAIMER:
 ALL INFORMATION CONTAINED WITHIN THIS DOCUMENT IS SOLE PROPERTY OF LAMBOO TECHNOLOGIES, LLC. ANY REPRODUCTION IN PART OR AS A WHOLE WITHOUT THE WRITTEN PERMISSION OF LAMBOO TECHNOLOGIES, LLC IS STRICTLY PROHIBITED.

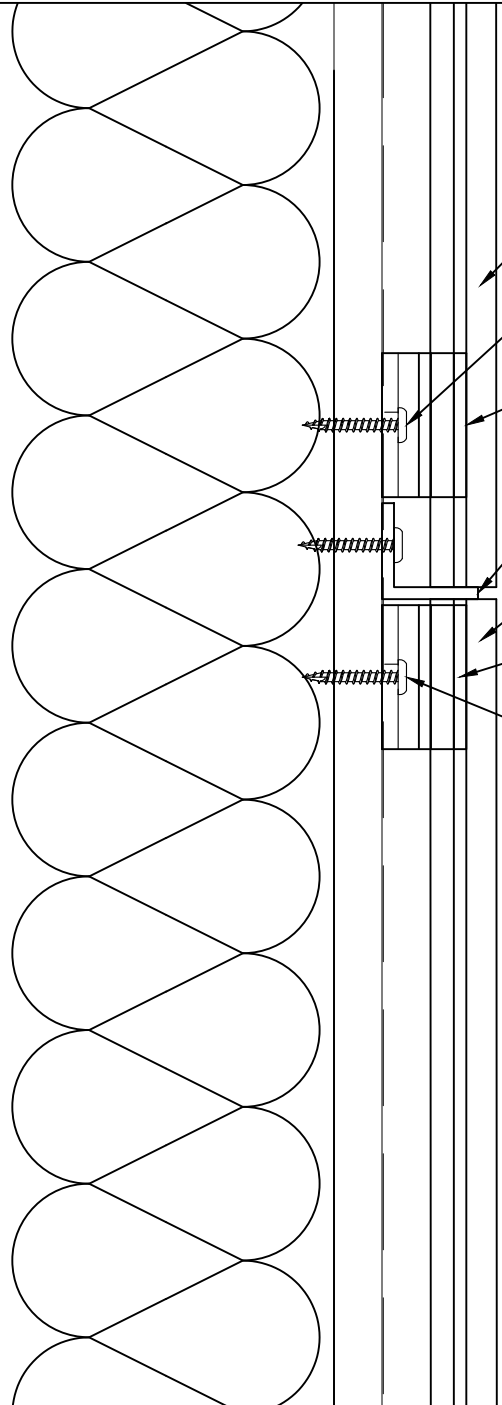
TITLE:DETAIL 6B
 INSIDE CORNER DETAIL

DRAWN BY: JDH	SHEET
DATE: 09/21/2022	12
SCALE: 6" = 1'-0"	



301 W. EDWARDS STREET/LITCHFIELD, IL 62056 P:866-966-2999
 E:ADMIN@LAMBOO.US W: WWW.LAMBOO.US

NO.	REVISION/ISSUE	DATE



- LAMBOO RAINSCREEN
3", 5" and 7"
- STAINLESS STEEL FASTENERS
1 PER CLIP – NON-HURRICANE ZONES
2 PER CLIP – HURRICANE ZONES
- LAMBOO TITAN CLIP
NOTE: PLACE CLIP DIRECTLY
ABOVE ANGLE
- .125" X 1" X 1" ANGLE
ALUMINUM – 8' LENGTHS
- LAMBOO RAINSCREEN
3", 5" and 7"
- LAMBOO TITAN CLIP
NOTE: PLACE CLIP DIRECTLY
AGAINST ANGLE
- STAINLESS STEEL FASTENERS
1 PER CLIP – NON-HURRICANE ZONES
2 PER CLIP – HURRICANE ZONES

- REST TOP PIECE OF LAMBOO RAINSCREEN AGAINST ALUMINUM ANGLE
- BUTT BOTTOM PIECE OF LAMBOO RAINSCREEN UP TO ALUMINUM ANGLE
- DRILL WEEP HOLES IN ANGLE EVERY 12"
- ALUMINUM MIGHT NEED TO BE PAINTED BLACK OR PROVIDED IN BLACK ANODIZED FINISH.
- ARCHITECT/CUSTOMER TO SPECIFY
- USE ALUMINUM ANGLE EVERY 16'-0" VERTICAL SPAN

NOTE: ALL RAINSCREEN CUT EDGES MUST BE SEALED PRIOR TO INSTALLATION

DISCLAIMER:
ALL INFORMATION CONTAINED WITHIN THIS DOCUMENT IS SOLE PROPERTY OF LAMBOO TECHNOLOGIES, LLC. ANY REPRODUCTION IN PART OR AS A WHOLE WITHOUT THE WRITTEN PERMISSION OF LAMBOO TECHNOLOGIES, LLC IS STRICTLY PROHIBITED.

TITLE: DETAIL 7A
BUTT JOINT-ANGLE OPTION
DETAIL

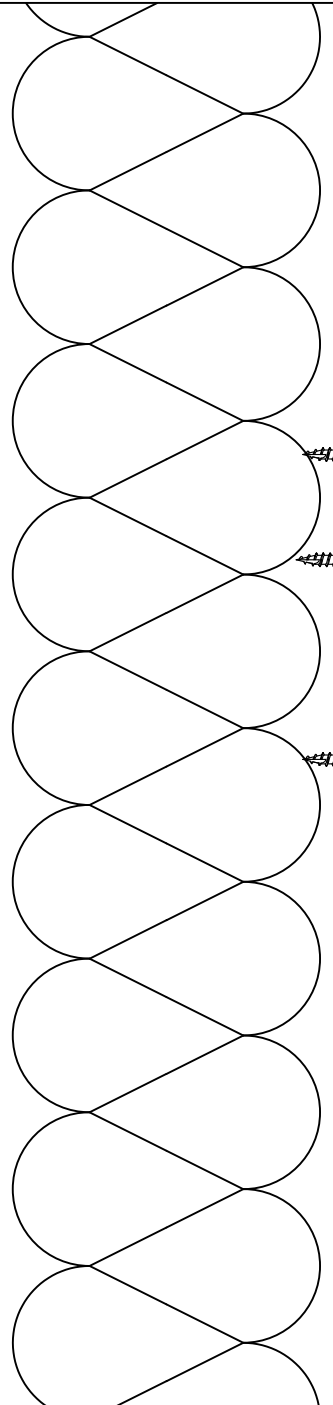
DRAWN BY:
JDH
DATE:
09/21/2022
SCALE:
6" = 1'-0"

SHEET
13



301 W. EDWARDS STREET/LITCHFIELD, IL 62056 P:866-966-2999
E:ADMIN@LAMBOO.US W: WWW.LAMBOO.US

NO.	REVISION/ISSUE	DATE



- LAMBOO RAINSCREEN
3", 5" and 7"
- STAINLESS STEEL FASTENERS
1 PER CLIP – NON-HURRICANE ZONES
2 PER CLIP – HURRICANE ZONES
- LAMBOO TITAN CLIP
NOTE: PLACE CLIP DIRECT
ABOVE STARTER RAIL
- LAMBOO STARTER RAIL
- ALLOW BOTH RAINSCREEN PIECES
TO BUTT AGAINST EACH OTHER
- LAMBOO RAINSCREEN
3", 5" and 7"
- LAMBOO TITAN CLIP
NOTE: PLACE CLIP AT THE
END OF THE RAINSCREEN
- STAINLESS STEEL FASTENERS
1 PER CLIP – NON-HURRICANE ZONES
2 PER CLIP – HURRICANE ZONES

- REST BOTTOM END OF TOP PIECE OF LAMBOO RAINSCREEN AGAINST STARTER RAIL
- NOTCH STARTING EDGE OF RAINSCREEN 3/8" X 1" TO FIT ON STARTER RAIL
- BUTT BOTH RAINSCREEN PIECES TOGETHER
- PLACE MOUNTING CLIPS AS CLOSE TO STARTER RAIL AS POSSIBLE.
- USE STARTER RAIL EVERY 16'-0" VERTICAL SPAN

NOTE: ALL RAINSCREEN CUT EDGES MUST BE SEALED PRIOR TO INSTALLATION

DISCLAIMER:
ALL INFORMATION CONTAINED WITHIN THIS DOCUMENT IS SOLE PROPERTY OF LAMBOO TECHNOLOGIES, LLC. ANY REPRODUCTION IN PART OR AS A WHOLE WITHOUT THE WRITTEN PERMISSION OF LAMBOO TECHNOLOGIES, LLC IS STRICTLY PROHIBITED.

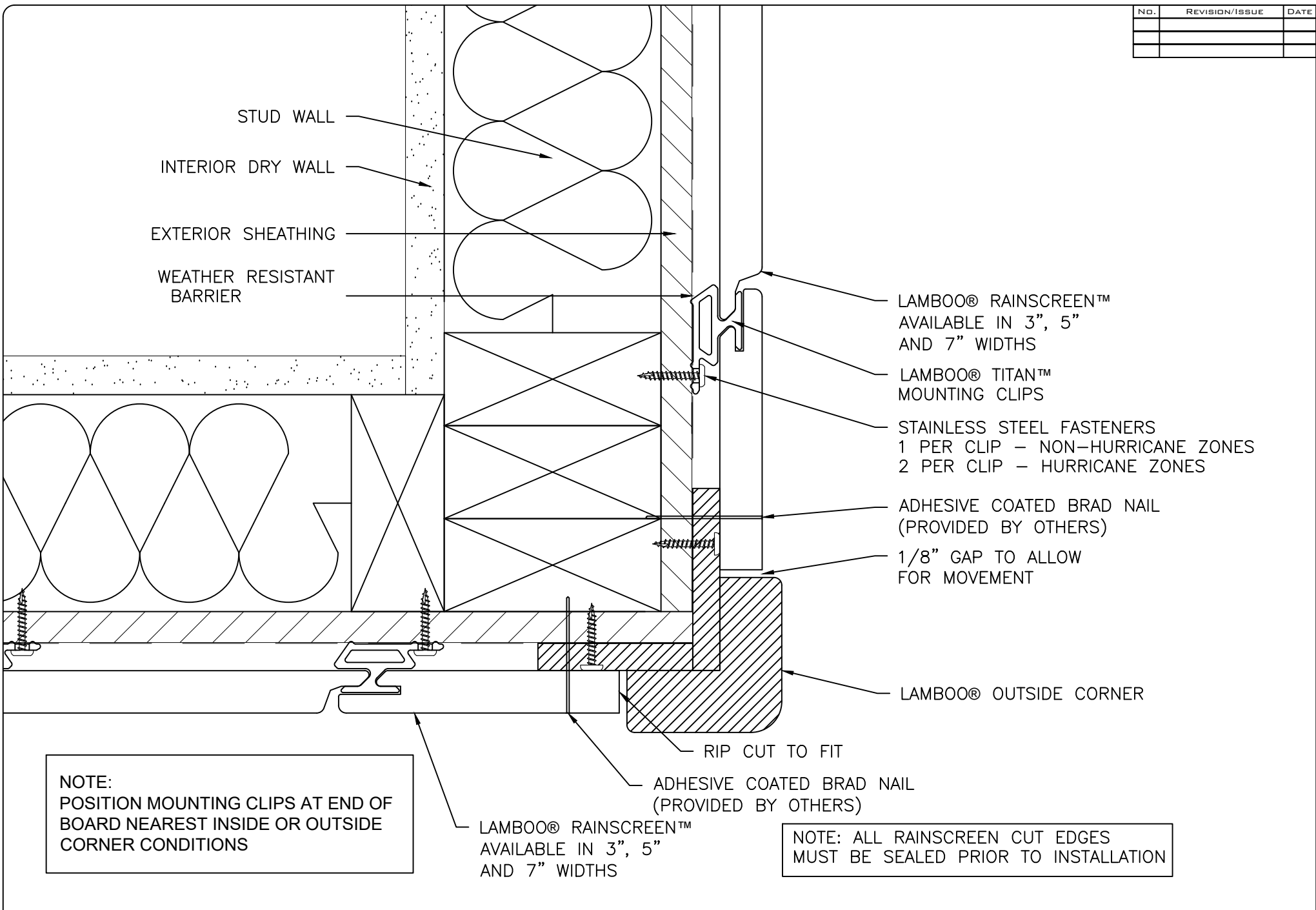
TITLE: DETAIL 7B
BUTT JOINT-
STARTER RAIL DETAIL

DRAWN BY: JDH	SHEET
DATE: 09/21/2022	14
SCALE: 6" = 1'-0"	



301 W. EDWARDS STREET/LITCHFIELD, IL 62056 P:866-966-2999
E:ADMIN@LAMBOO.US W: WWW.LAMBOO.US

NO.	REVISION/ISSUE	DATE



NOTE:
POSITION MOUNTING CLIPS AT END OF BOARD NEAREST INSIDE OR OUTSIDE CORNER CONDITIONS

NOTE: ALL RAINSCREEN CUT EDGES MUST BE SEALED PRIOR TO INSTALLATION

DISCLAIMER:
ALL INFORMATION CONTAINED WITHIN THIS DOCUMENT IS SOLE PROPERTY OF LAMBOO TECHNOLOGIES, LLC. ANY REPRODUCTION IN PART OR AS A WHOLE WITHOUT THE WRITTEN PERMISSION OF LAMBOO TECHNOLOGIES, LLC IS STRICTLY PROHIBITED.

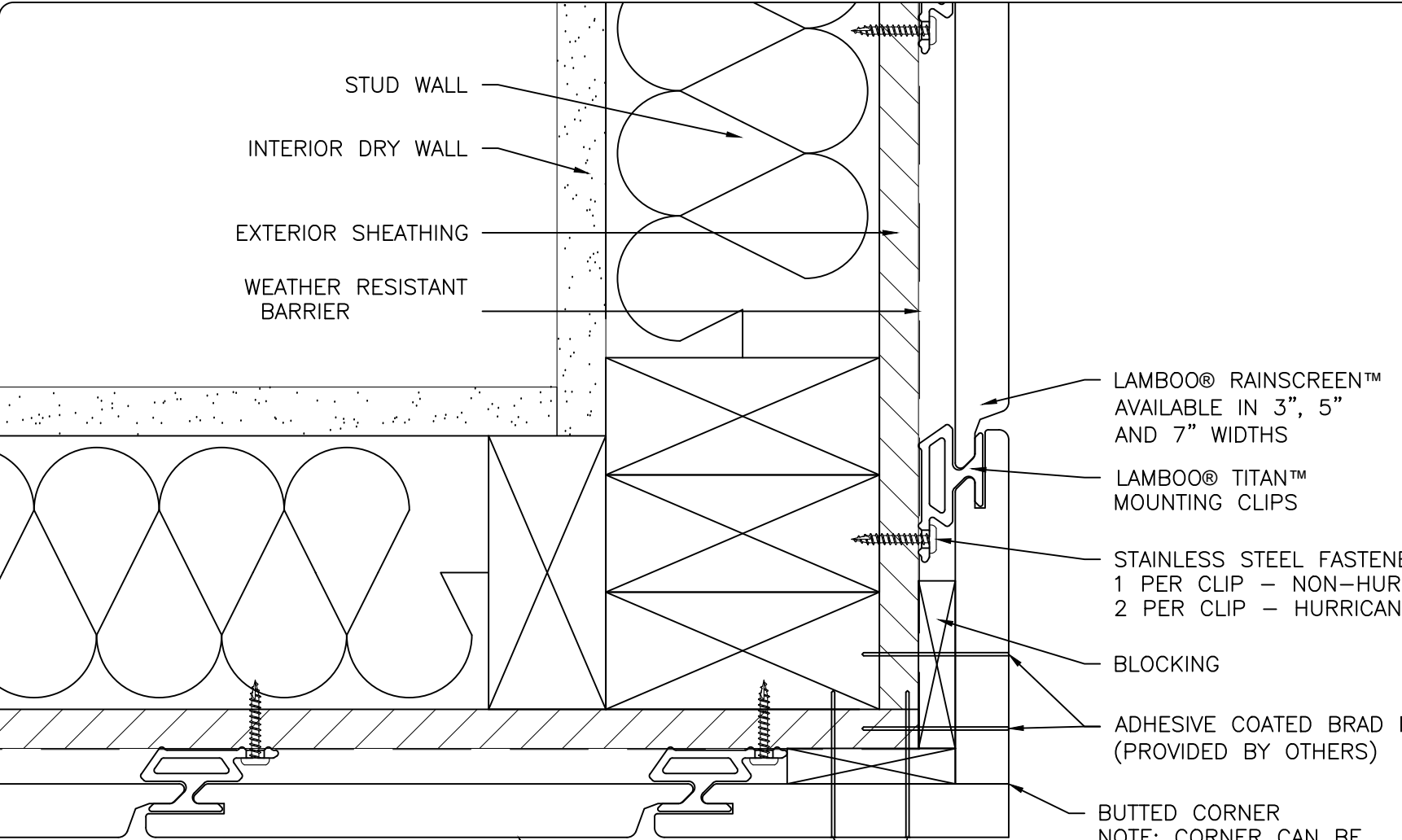
TITLE:DETAIL 8A
OUTSIDE CORNER DETAIL

DRAWN BY: JDH	SHEET
DATE: 09/21/2022	15
SCALE: 6" = 1'-0"	



301 W. EDWARDS STREET/LITCHFIELD, IL 62056 P:866-966-2999
E:ADMIN@LAMBOO.US W: WWW.LAMBOO.US

NO.	REVISION/ISSUE	DATE



STUD WALL
 INTERIOR DRY WALL
 EXTERIOR SHEATHING
 WEATHER RESISTANT BARRIER

LAMBOO® RAINSCREEN™
 AVAILABLE IN 3", 5"
 AND 7" WIDTHS

LAMBOO® TITAN™
 MOUNTING CLIPS

STAINLESS STEEL FASTENERS
 1 PER CLIP – NON-HURRICANE ZONES
 2 PER CLIP – HURRICANE ZONES

BLOCKING

ADHESIVE COATED BRAD NAIL
 (PROVIDED BY OTHERS)

BUTTED CORNER
 NOTE: CORNER CAN BE
 MITER CUT TO 45 DEGREE
 IF REQUIRED

NOTE:
 POSITION MOUNTING CLIPS AT END OF
 BOARD NEAREST INSIDE OR OUTSIDE
 CORNER CONDITIONS

NOTE: ALL RAINSCREEN CUT EDGES
 MUST BE SEALED PRIOR TO INSTALLATION

LAMBOO® RAINSCREEN™
 AVAILABLE IN 3", 5"
 AND 7" WIDTHS

ADHESIVE COATED BRAD NAIL
 (PROVIDED BY OTHERS)

DISCLAIMER:
 ALL INFORMATION CONTAINED WITHIN THIS DOCUMENT IS SOLE PROPERTY OF LAMBOO TECHNOLOGIES, LLC. ANY REPRODUCTION
 IN PART OR AS A WHOLE WITHOUT THE WRITTEN PERMISSION OF LAMBOO TECHNOLOGIES, LLC IS STRICTLY PROHIBITED.

TITLE:DETAIL 8B
 OUTSIDE CORNER DETAIL

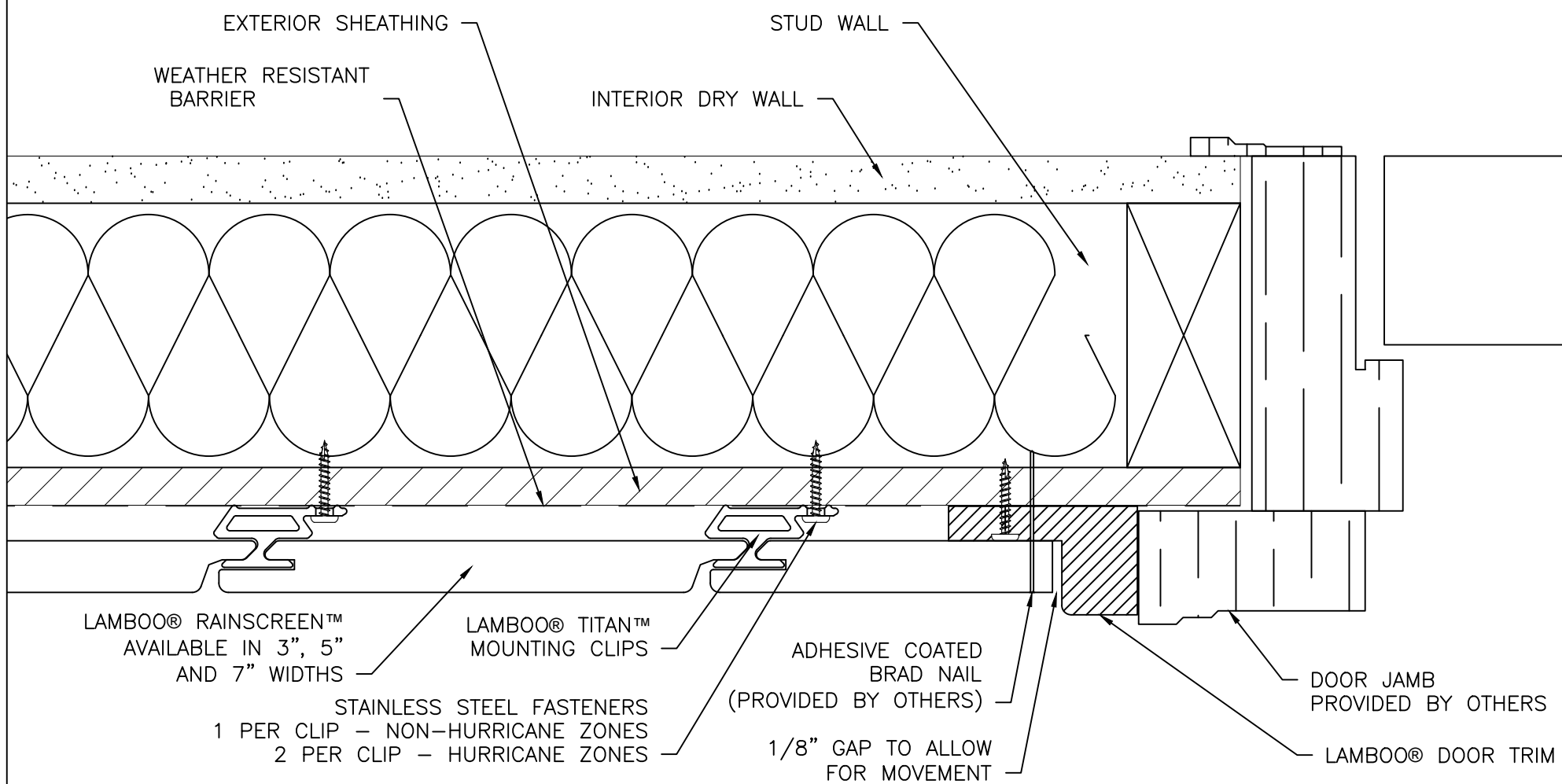
DRAWN BY:
 JDH
 DATE:
 09/21/2022
 SCALE:
 6" = 1'-0"

SHEET
 16



301 W. EDWARDS STREET/LITCHFIELD, IL 62056 P:866-966-2999
 E:ADMIN@LAMBOO.US W: WWW.LAMBOO.US

NO.	REVISION/ISSUE	DATE



NOTE:
PLACE THE TITAN MOUNTING CLIPS AS CLOSE TO THE END OF THE PIECE TO PROVIDE THE MOST SUPPORT FOR THE RAINSCREEN SYSTEM

NOTE: ALL RAINSCREEN CUT EDGES MUST BE SEALED PRIOR TO INSTALLATION

DISCLAIMER:
ALL INFORMATION CONTAINED WITHIN THIS DOCUMENT IS SOLE PROPERTY OF LAMBOO TECHNOLOGIES, LLC. ANY REPRODUCTION IN PART OR AS A WHOLE WITHOUT THE WRITTEN PERMISSION OF LAMBOO TECHNOLOGIES, LLC IS STRICTLY PROHIBITED.

TITLE:DETAIL 9A
DOOR JAMB DETAIL

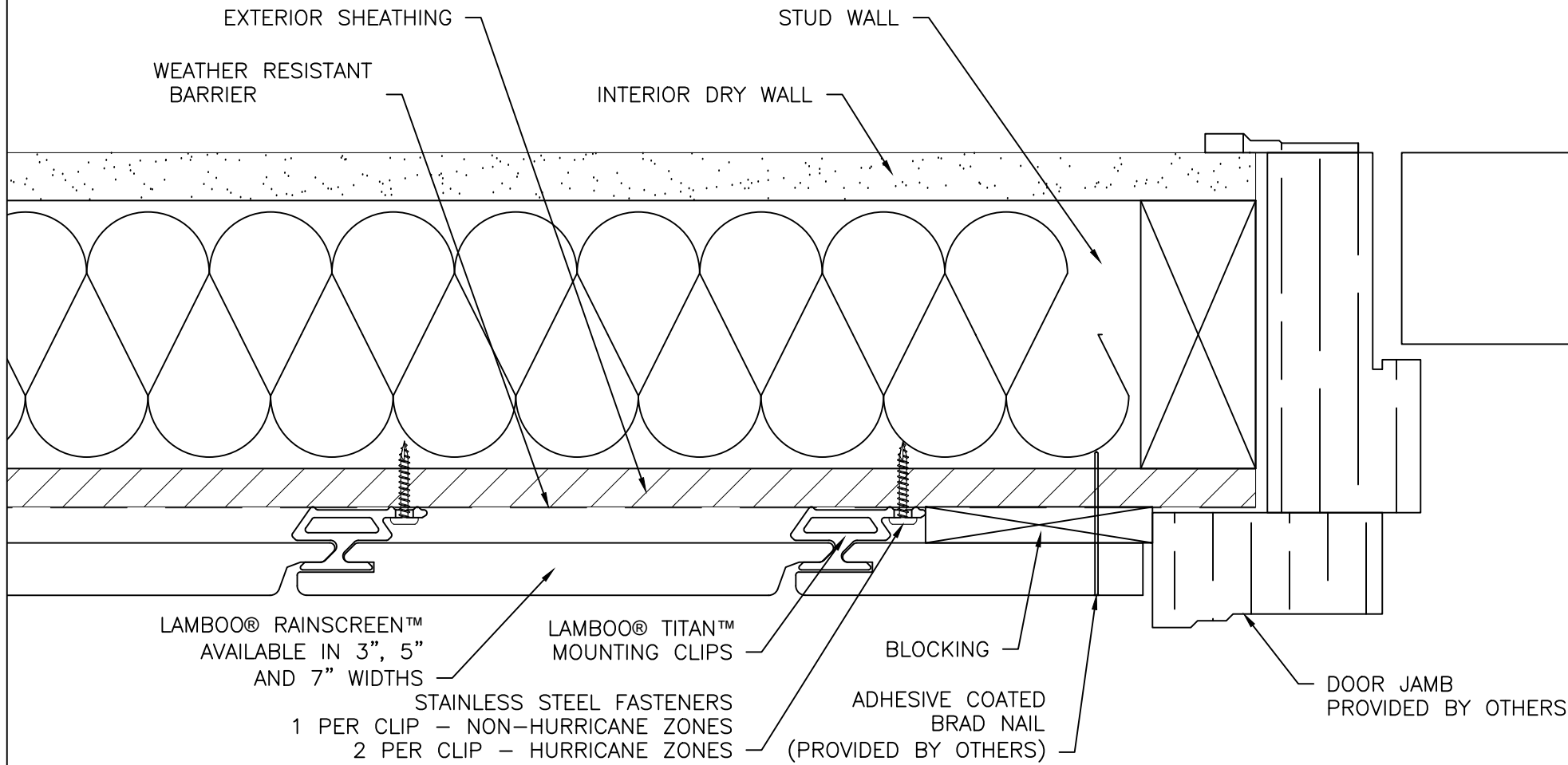
DRAWN BY:
JDH
DATE:
09/21/2022
SCALE:
6" = 1'-0"

SHEET
17



301 W. EDWARDS STREET/LITCHFIELD, IL 62056 P:866-966-2999
E:ADMIN@LAMBOO.US W: WWW.LAMBOO.US

NO.	REVISION/ISSUE	DATE



NOTE:
PLACE THE TITAN MOUNTING CLIPS AS
CLOSE TO THE END OF THE PIECE TO
PROVIDE THE MOST SUPPORT FOR THE
RAINSCREEN SYSTEM

NOTE: ALL RAINSCREEN CUT EDGES
MUST BE SEALED PRIOR TO INSTALLATION

DISCLAIMER:
ALL INFORMATION CONTAINED WITHIN THIS DOCUMENT IS SOLE PROPERTY OF LAMBOO TECHNOLOGIES, LLC. ANY REPRODUCTION
IN PART OR AS A WHOLE WITHOUT THE WRITTEN PERMISSION OF LAMBOO TECHNOLOGIES, LLC IS STRICTLY PROHIBITED.

**TITLE:DETAIL 9B
DOOR JAMB DETAIL**

DRAWN BY:
JDH
DATE:
09/21/2022
SCALE:
6" = 1'-0"

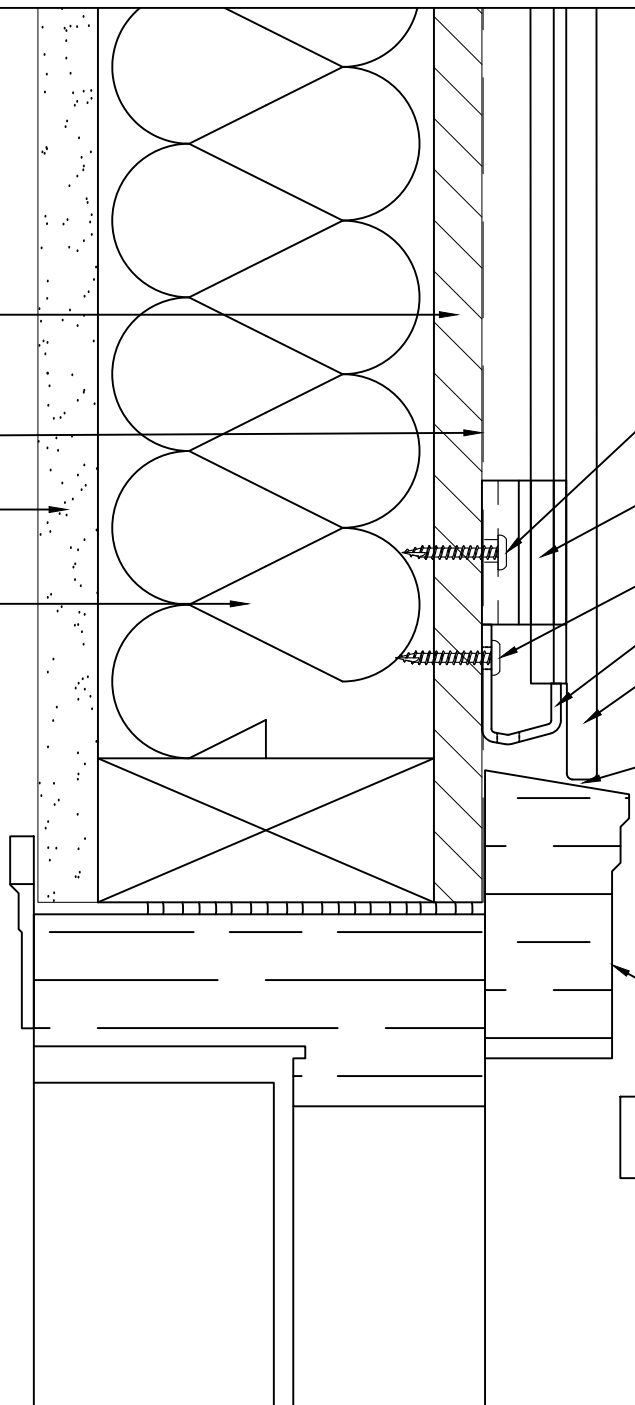
SHEET
18



301 W. EDWARDS STREET/LITCHFIELD, IL 62056 P:866-966-2999
E:ADMIN@LAMBOO.US W: WWW.LAMBOO.US

NO.	REVISION/ISSUE	DATE

EXTERIOR SHEATHING
 WEATHER RESISTANT BARRIER
 INTERIOR DRY WALL
 STUD WALL



STAINLESS STEEL FASTENERS
 1 PER CLIP – NON-HURRICANE ZONES
 2 PER CLIP – HURRICANE ZONES

LAMBOO® TITAN CLIP
 NOTE: PLACE CLIP DIRECTLY ABOVE STARTER RAIL

STAINLESS STEEL FASTENERS
 STARTER RAIL

LAMBOO® RAINSCREEN™
 AVAILABLE IN 3", 5" AND 7" WIDTHS

1/8" GAP TO ALLOW FOR WATER DRAINAGE

DOOR JAMB PROVIDED BY OTHERS

NOTE: ALL RAINSCREEN CUT EDGES MUST BE SEALED PRIOR TO INSTALLATION

DISCLAIMER:
 ALL INFORMATION CONTAINED WITHIN THIS DOCUMENT IS SOLE PROPERTY OF LAMBOO TECHNOLOGIES, LLC. ANY REPRODUCTION IN PART OR AS A WHOLE WITHOUT THE WRITTEN PERMISSION OF LAMBOO TECHNOLOGIES, LLC IS STRICTLY PROHIBITED.

TITLE:DETAIL 10
 DOOR HEAD DETAIL

DRAWN BY:
 JDH
 DATE:
 09/21/2022
 SCALE:
 6" = 1'-0"

SHEET
 19



301 W. EDWARDS STREET/LITCHFIELD, IL 62056 P:866-966-2999
 E:ADMIN@LAMBOO.US W: WWW.LAMBOO.US