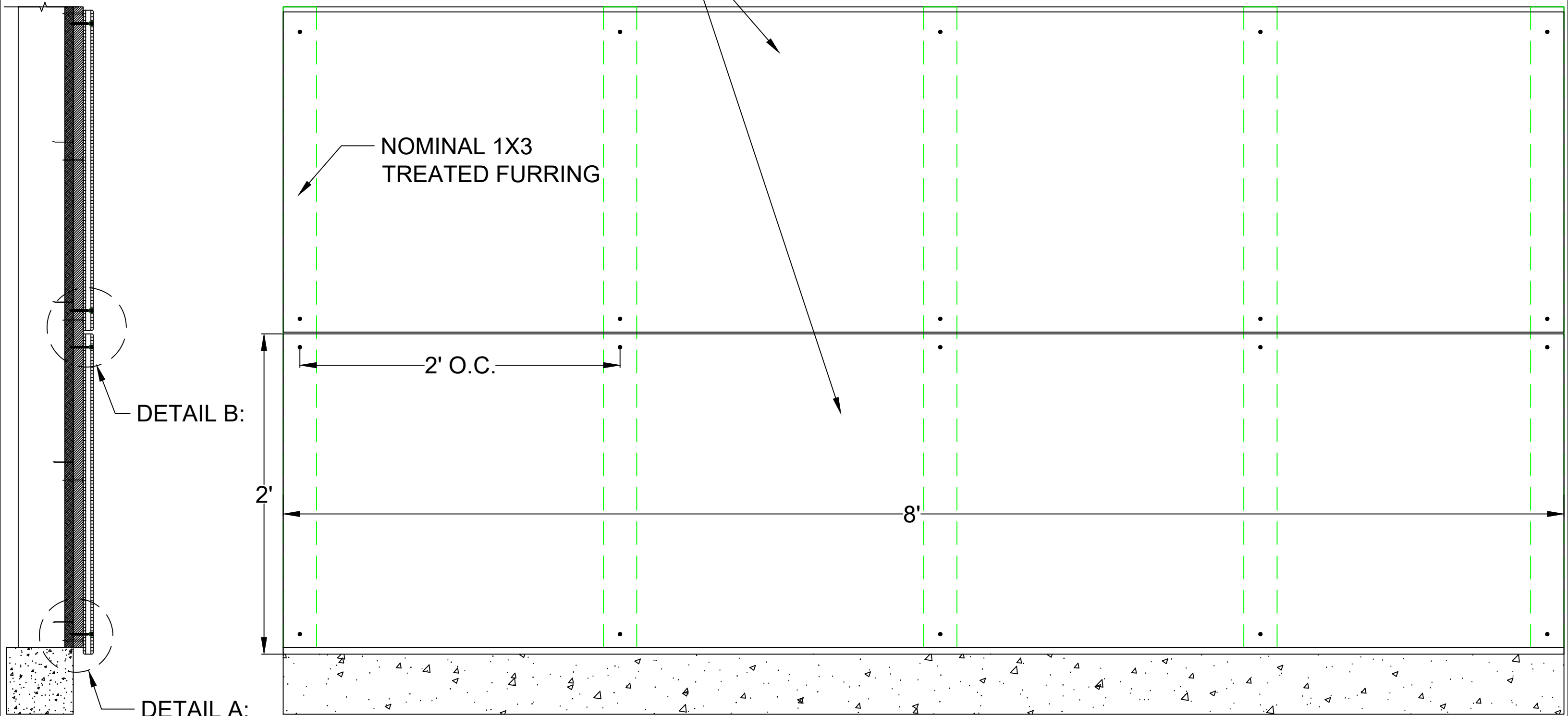


NO.	REVISION/ISSUE	DATE

LAMBOO® ELEMENTS™ CROSS-LAMINATED  
 PANELS - EXTERIOR GRADE  
 FABRICATED AND FINISHED



DETAIL B:

DETAIL A:

TITLE: LAMBOO® ELEMENTS™ PANELS 2' x 8' x 3/4"  
 FACE-FASTENED METHOD

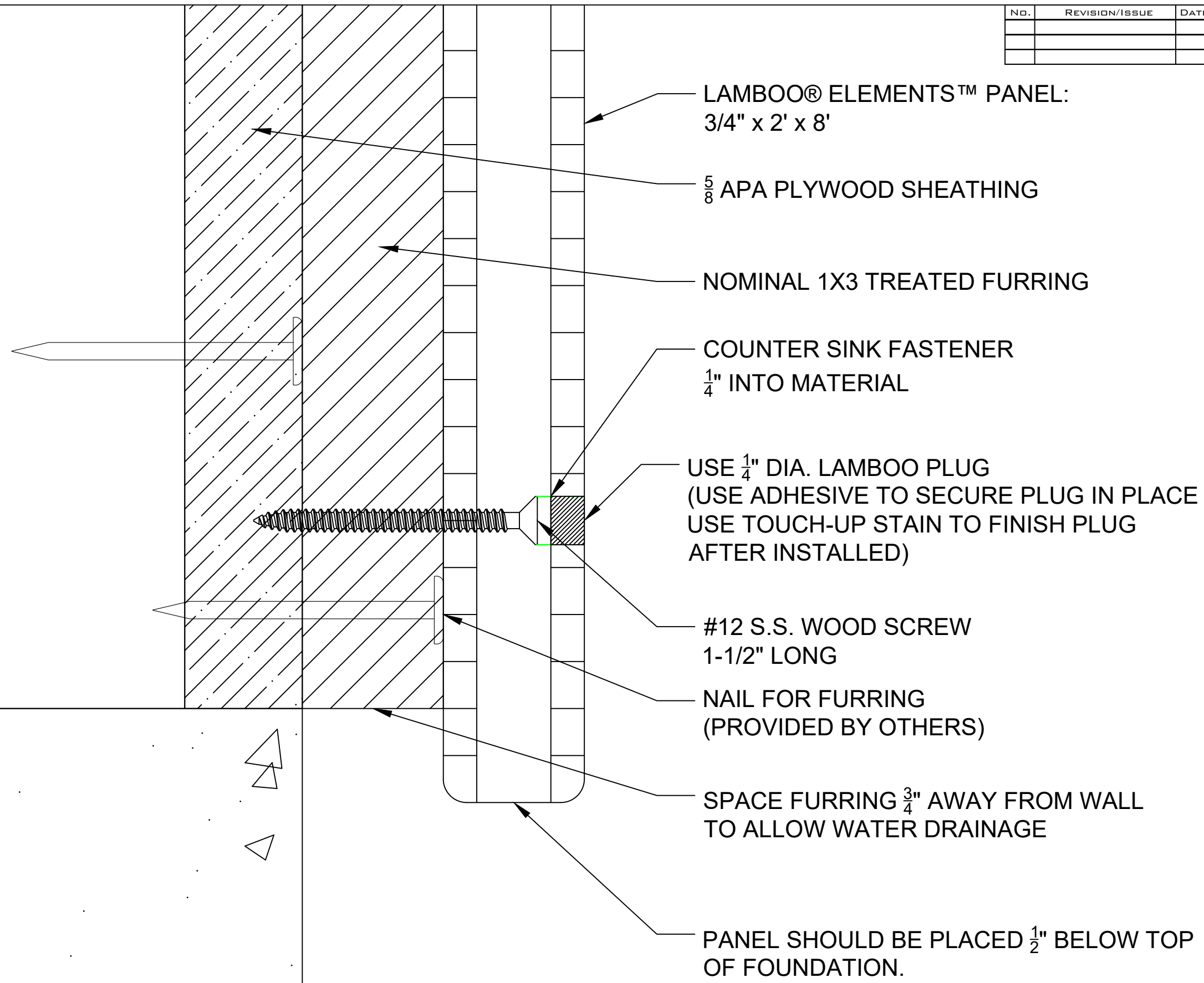
DRAWN BY:  
 JDH  
 DATE:  
 02/05/2021  
 SCALE:  
 NTS

SHEET  
 1



311 W. EDWARDS STREET/LITCHFIELD, IL 62056 P:866-966-2999 E:ADMIN@LAMBOO.US W: WWW.LAMBOO.US  
 DISCLAIMER:  
 ALL INFORMATION CONTAINED WITHIN THIS DOCUMENT IS SOLE PROPERTY OF LAMBOO TECHNOLOGIES, LLC. ANY REPRODUCTION IN PART OR AS A WHOLE WITHOUT THE WRITTEN PERMISSION  
 OF LAMBOO TECHNOLOGIES, LLC IS STRICTLY PROHIBITED.

NO.	REVISION/ISSUE	DATE



LAMBOO® ELEMENTS™ PANEL:  
3/4" x 2' x 8'

5/8" APA PLYWOOD SHEATHING

NOMINAL 1X3 TREATED FURRING

COUNTER SINK FASTENER  
1/4" INTO MATERIAL

USE 1/4" DIA. LAMBOO PLUG  
(USE ADHESIVE TO SECURE PLUG IN PLACE  
USE TOUCH-UP STAIN TO FINISH PLUG  
AFTER INSTALLED)

#12 S.S. WOOD SCREW  
1-1/2" LONG

NAIL FOR FURRING  
(PROVIDED BY OTHERS)

SPACE FURRING 3/4" AWAY FROM WALL  
TO ALLOW WATER DRAINAGE

PANEL SHOULD BE PLACED 1/2" BELOW TOP  
OF FOUNDATION.

TITLE: LAMBOO® ELEMENTS™ PANELS 2' x 8' x 3/4"  
FACE-FASTENED - DETAIL A:

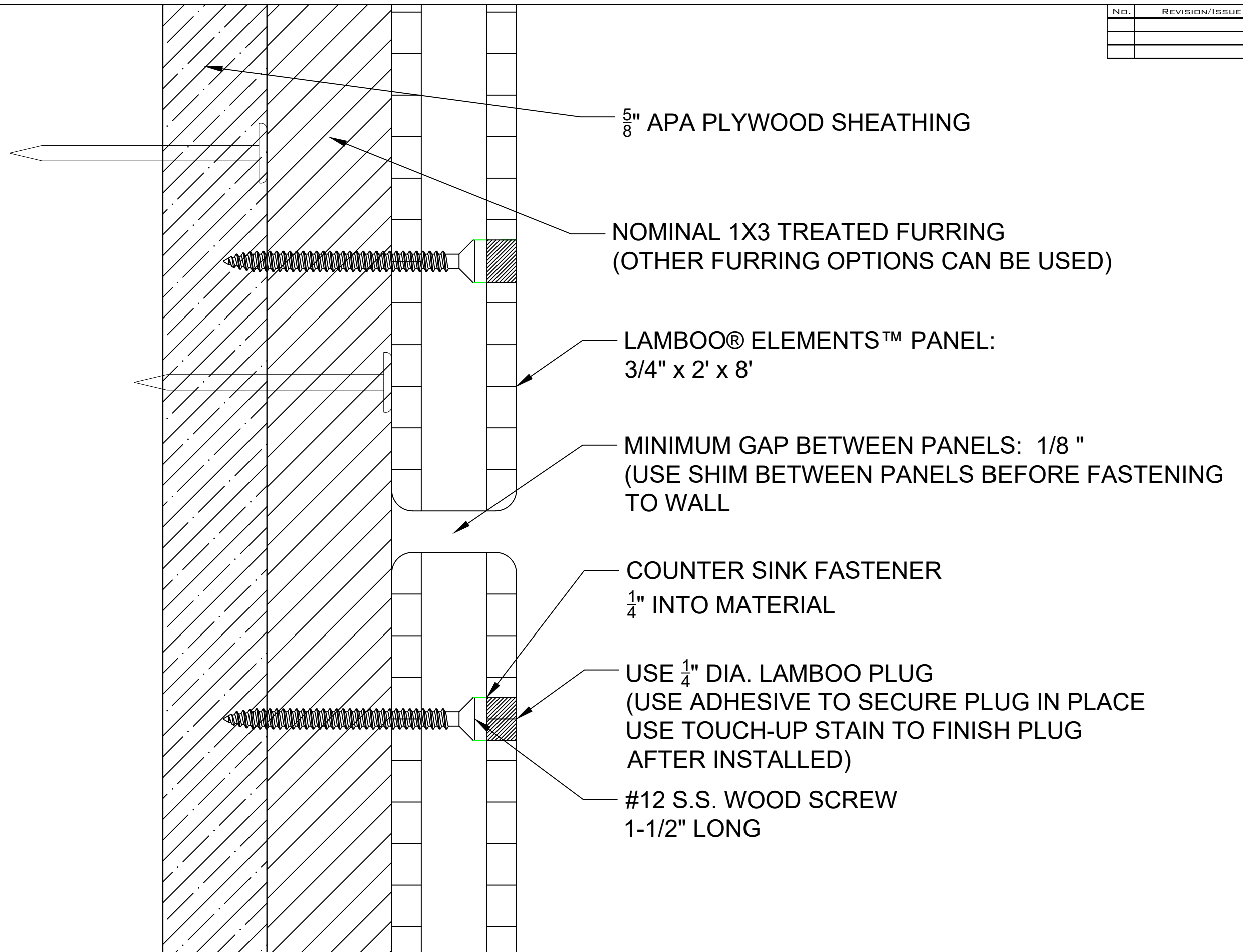
DRAWN BY:  
JDH  
DATE:  
02/05/2021  
SCALE:  
NTS

SHEET  
2



311 W. EDWARDS STREET/LITCHFIELD, IL 62056 P:866-966-2999 E:ADMIN@LAMBOO.US W: WWW.LAMBOO.US  
DISCLAIMER:  
ALL INFORMATION CONTAINED WITHIN THIS DOCUMENT IS SOLE PROPERTY OF LAMBOO TECHNOLOGIES, LLC. ANY REPRODUCTION IN PART OR AS A WHOLE WITHOUT THE WRITTEN PERMISSION  
OF LAMBOO TECHNOLOGIES, LLC IS STRICTLY PROHIBITED.

NO.	REVISION/ISSUE	DATE



5/8" APA PLYWOOD SHEATHING

NOMINAL 1X3 TREATED FURRING  
(OTHER FURRING OPTIONS CAN BE USED)

LAMBOO® ELEMENTS™ PANEL:  
3/4" x 2' x 8'

MINIMUM GAP BETWEEN PANELS: 1/8 "  
(USE SHIM BETWEEN PANELS BEFORE FASTENING TO WALL)

COUNTER SINK FASTENER  
1/4" INTO MATERIAL

USE 1/4" DIA. LAMBOO PLUG  
(USE ADHESIVE TO SECURE PLUG IN PLACE  
USE TOUCH-UP STAIN TO FINISH PLUG  
AFTER INSTALLED)

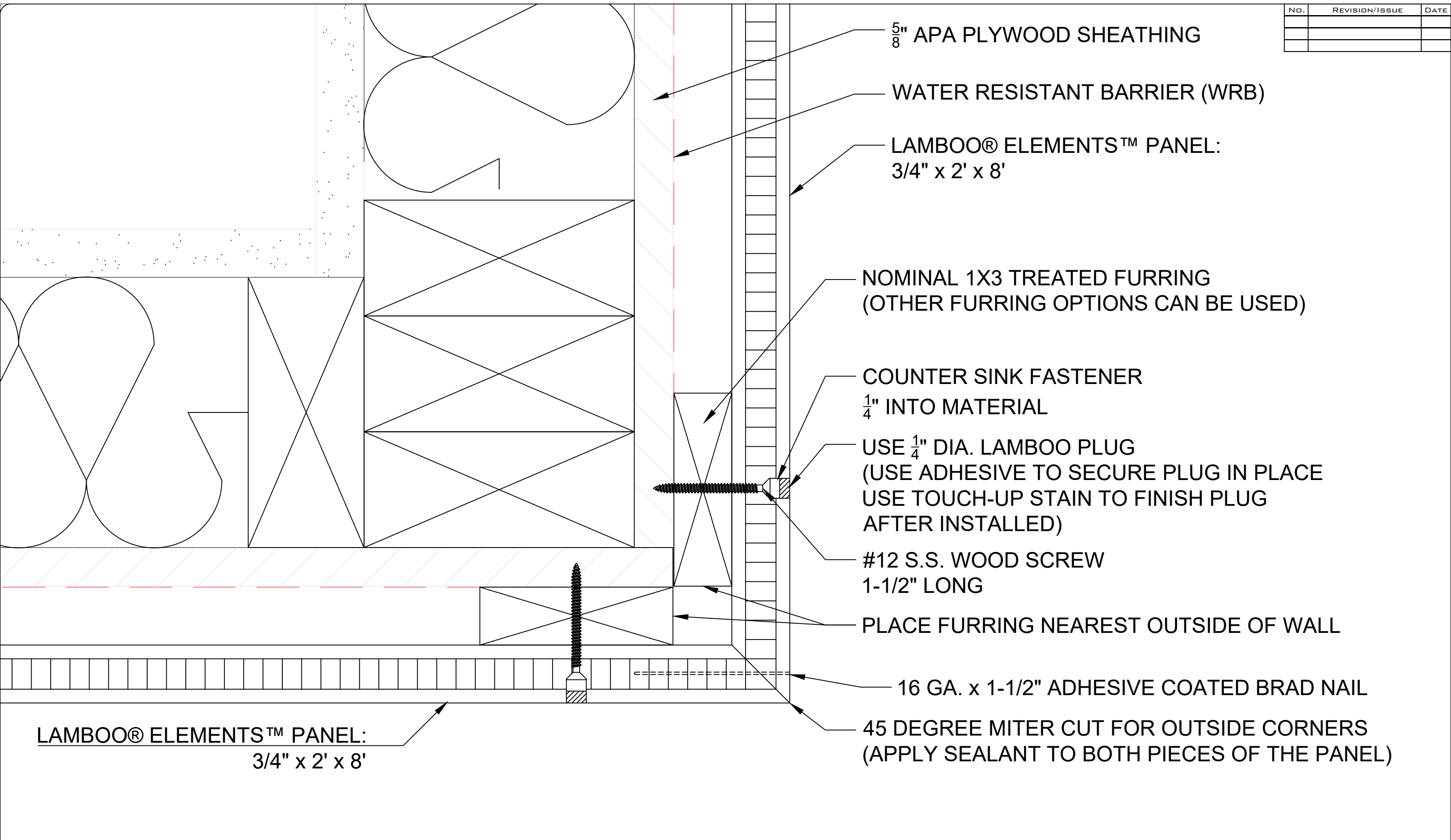
#12 S.S. WOOD SCREW  
1-1/2" LONG

TITLE: LAMBOO® ELEMENTS™ PANELS 2' x 8' x 3/4"  
FACE-FASTENED - DETAIL B:

DRAWN BY:  
JDH  
DATE:  
02/05/2021  
SCALE:  
NTS

SHEET  
3

NO.	REVISION/ISSUE	DATE



5/8" APA PLYWOOD SHEATHING

WATER RESISTANT BARRIER (WRB)

LAMBOO® ELEMENTS™ PANEL:  
3/4" x 2' x 8'

NOMINAL 1X3 TREATED FURRING  
(OTHER FURRING OPTIONS CAN BE USED)

COUNTER SINK FASTENER  
1/4" INTO MATERIAL

USE 1/4" DIA. LAMBOO PLUG  
(USE ADHESIVE TO SECURE PLUG IN PLACE  
USE TOUCH-UP STAIN TO FINISH PLUG  
AFTER INSTALLED)

#12 S.S. WOOD SCREW  
1-1/2" LONG

PLACE FURRING NEAREST OUTSIDE OF WALL

16 GA. x 1-1/2" ADHESIVE COATED BRAD NAIL

45 DEGREE MITER CUT FOR OUTSIDE CORNERS  
(APPLY SEALANT TO BOTH PIECES OF THE PANEL)

LAMBOO® ELEMENTS™ PANEL:  
3/4" x 2' x 8'

TITLE: LAMBOO® ELEMENTS™ PANELS 2' x 8' x 3/4"  
OUTSIDE CORNER CONDITION

DRAWN BY:  
JDH  
DATE:  
02/05/2021  
SCALE:  
NTS

SHEET  
4



311 W. EDWARDS STREET/LITCHFIELD, IL 62056 P:866-966-2999 E:ADMIN@LAMBOO.US W: WWW.LAMBOO.US  
DISCLAIMER:  
ALL INFORMATION CONTAINED WITHIN THIS DOCUMENT IS SOLE PROPERTY OF LAMBOO TECHNOLOGIES, LLC. ANY REPRODUCTION IN PART OR AS A WHOLE WITHOUT THE WRITTEN PERMISSION OF LAMBOO TECHNOLOGIES, LLC IS STRICTLY PROHIBITED.

NO.	REVISION/ISSUE	DATE

**PRODUCT NOTES:**

**LAMBOO® ELEMENTS™ CROSS-LAMINATED PANELS**

**AVAILABLE THICKNESS:**

1/2" / 3/4" / 1"

THICKER PANELS AVAILABLE UPON REQUEST. MINIMUM ORDER QUANTITIES REQUIRED.

**SHEET SIZE WIDTH:**

12" / 24" / 48"

**LENGTH:**

4' / 8'

CUSTOM LENGTHS ARE AVAILABLE WITH MINIMUM ORDER REQUIREMENTS.

- Panel products can be used for interior and exterior applications.
- Lamboo does provide fabrication and finish services with its products.
- Typical Fabrication and Finishing Lead-times: 4 to 6 weeks dependent on volume and complexity.
- Hidden fastening hardware can be provide upon request.
- Lamboo can ship products throughout the US as well as Canada and Mexico.

**CONTACT INFORMATION:**

Website: [www.lamboo.us](http://www.lamboo.us)

Email: [sales@lamboo.us](mailto:sales@lamboo.us)

Phone: 866-966-2999

