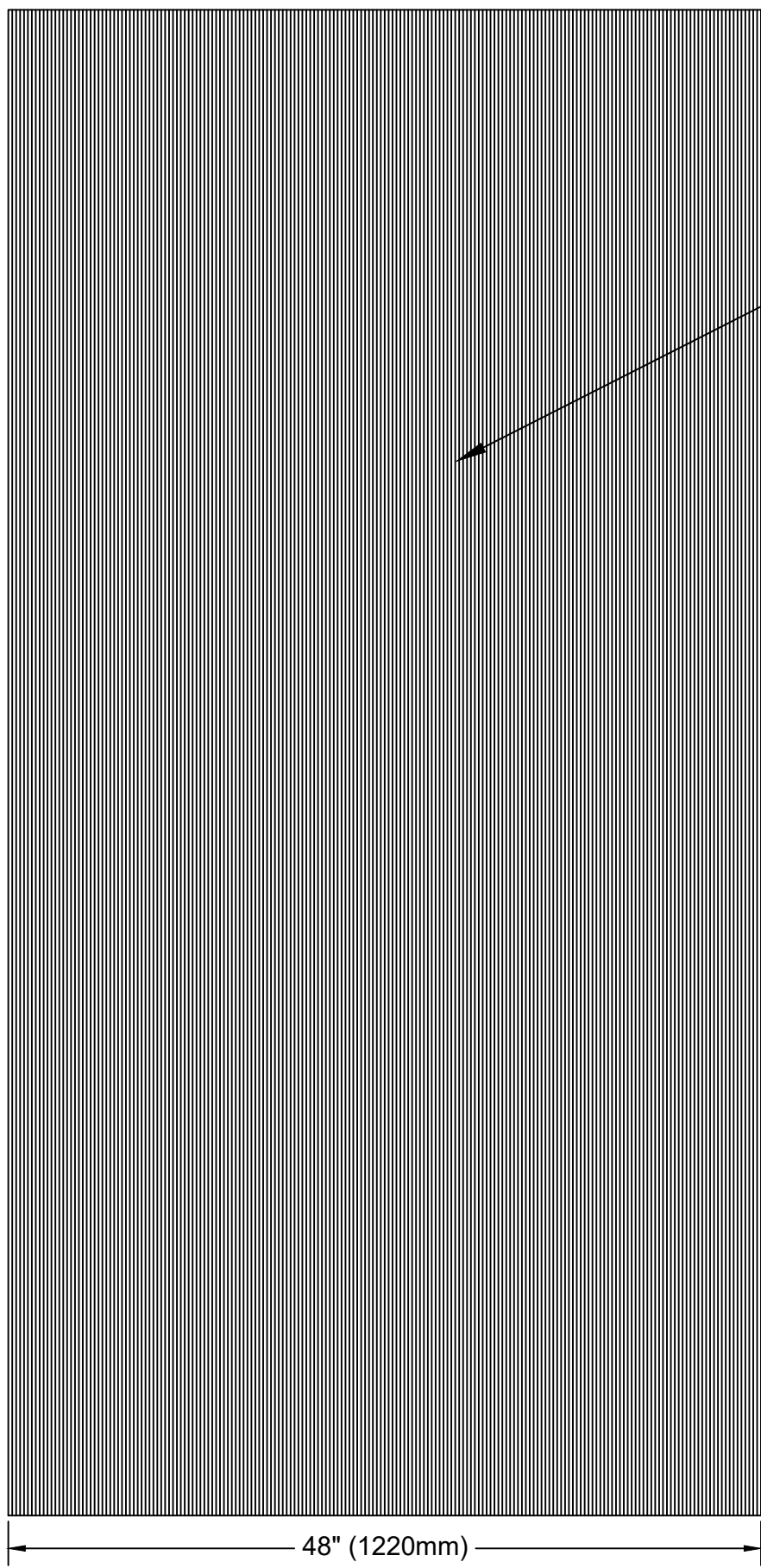


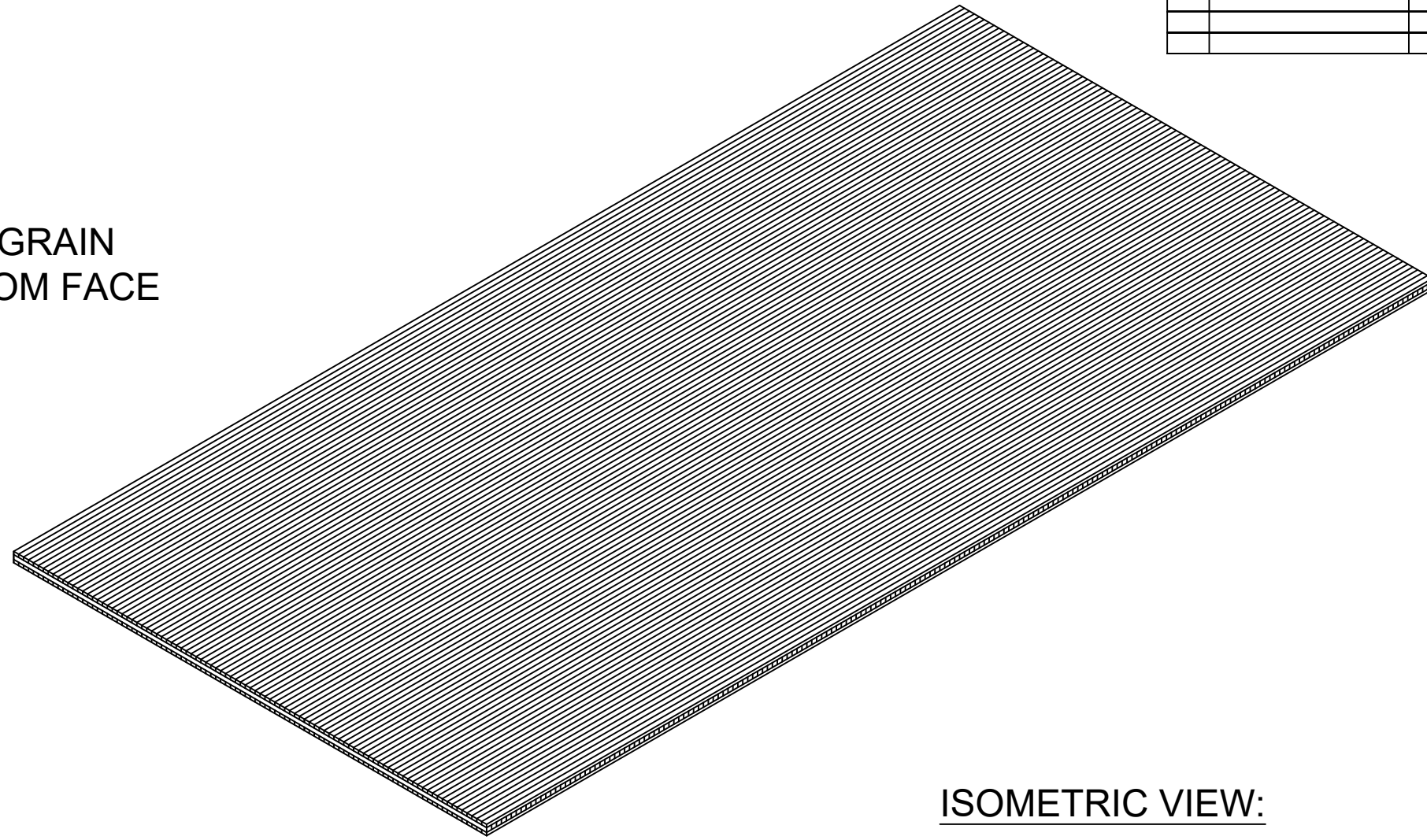
No.	REVISION/ISSUE	DATE



VERTICAL GRAIN
TOP/BOTTOM FACE

96" (2440mm)

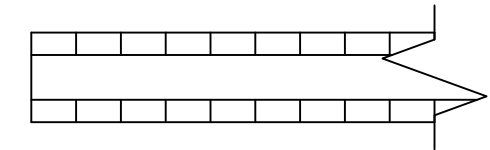
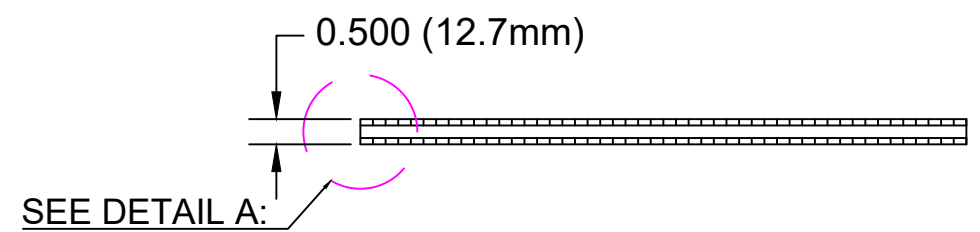
48" (1220mm)



ISOMETRIC VIEW:

NOTES:

- ALL UNITS IN INCHES UNLESS SPECIFIED
- STOCK PANELS ARE UNFINISHED
- SANDED SURFACE FINISH: 120 GRIT
- EXTERIOR USE
- BASE COLOR: CARBONIZED
- CUSTOM SIZING AVAILABLE UPON REQUEST



DETAIL A: 3-LAYER

BY SIGNING THIS DOCUMENT YOU THE CUSTOMER HAVE AGREED TO THE INFORMATION AS STATED IN THIS DOCUMENT. ANY CORRECTIONS REQUESTED AFTER DRAWINGS HAVE BEEN APPROVED WILL BE CHARGED BY LAMBOO ON AN HOURLY BASIS. SIGNATURE: _____

TITLE:
VCP-C(050)-EXT-4896

DRAWN BY:
JDH
DATE:
10/15/2019
SCALE:
NTS

SHEET
1



311 W. EDWARDS STREET/LITCHFIELD, IL 62056 P:866-966-2999 E:ADMIN@LAMBOO.US W: WWW.LAMBOO.US
DISCLAIMER: ALL INFORMATION CONTAINED WITHIN THIS DOCUMENT IS SOLE PROPERTY OF LAMBOO TECHNOLOGIES, LLC. ANY REPRODUCTION IN PART OR AS A WHOLE WITHOUT THE WRITTEN PERMISSION OF LAMBOO TECHNOLOGIES, LLC IS STRICTLY PROHIBITED.